

245 5TH AVE

P rime NoMad Retail Opportunity

MOINIAN

BRASSERIE

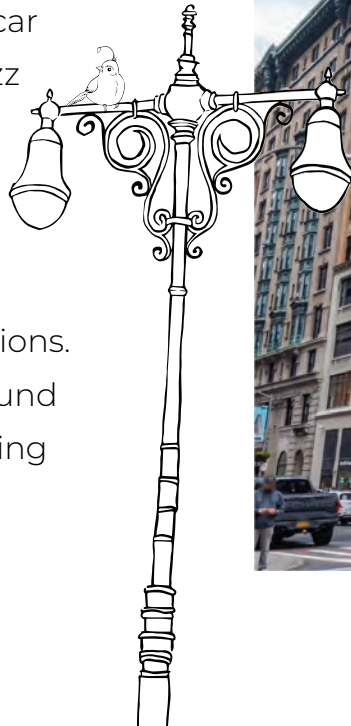
BRASSERIE



245 5TH AVENUE

Located at the corner of 28th Street and 5th Avenue just north of Madison Square Park, this centrally located neighborhood is the current hub for New York's creative and tech industries. New restaurants, bars and world-class hotels line historic streets that were once stomping grounds for legends such as Oscar Wild and Mark Twain making this area buzz with its own unique energy.

Midtown, downtown, eastside and westside all converge here, allowing easy access to public transportation in all directions. Commercial and residential buildings abound making this neighborhood fast-paced during the week and relaxing on the weekends.



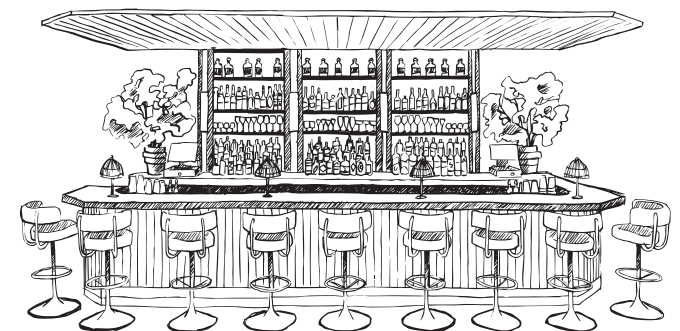
NOMAD DISTRICT

Known for its mix of historic charm and contemporary flair, NoMad has become a popular destination for locals and tourists alike. The area derives its name from its location just north of the iconic Madison Square Park. NoMad is characterized by its stunning architecture, featuring beautifully restored Beaux-Arts buildings, stylish boutique hotels, and upscale residential developments.





The neighborhood has experienced a revival in recent years, with a surge of new restaurants, trendy bars, and fashionable shops opening their doors. NoMad is also home to several notable landmarks including the Flatiron Building, a triangular-shaped skyscraper that has become an iconic symbol of New York City.







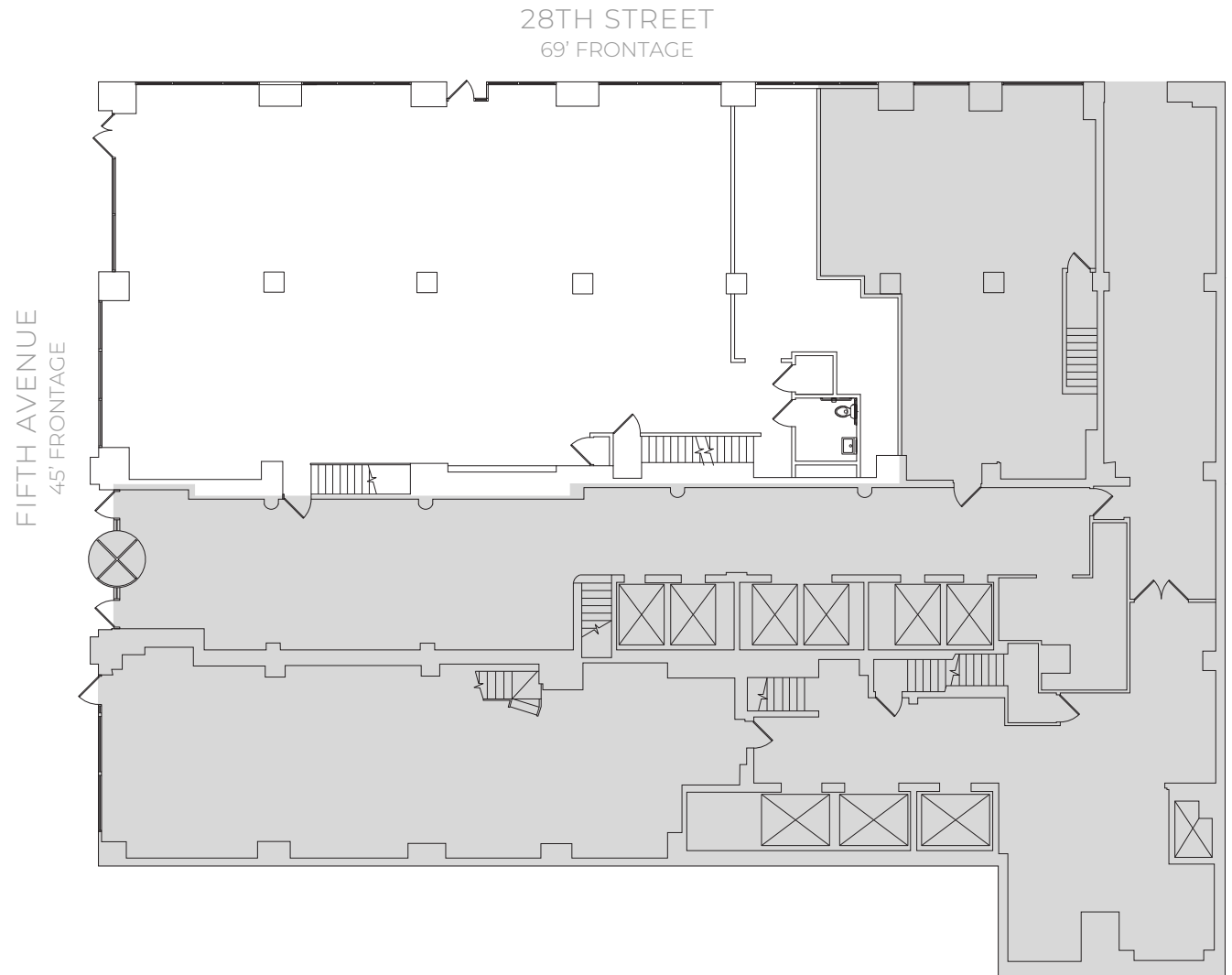
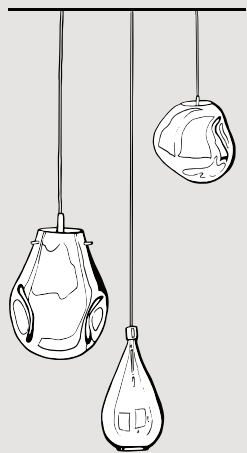
245

5TH AVE

*G*round Floor

Size:
3,786 SF

Ceiling Height:
19'6" floor to ceiling



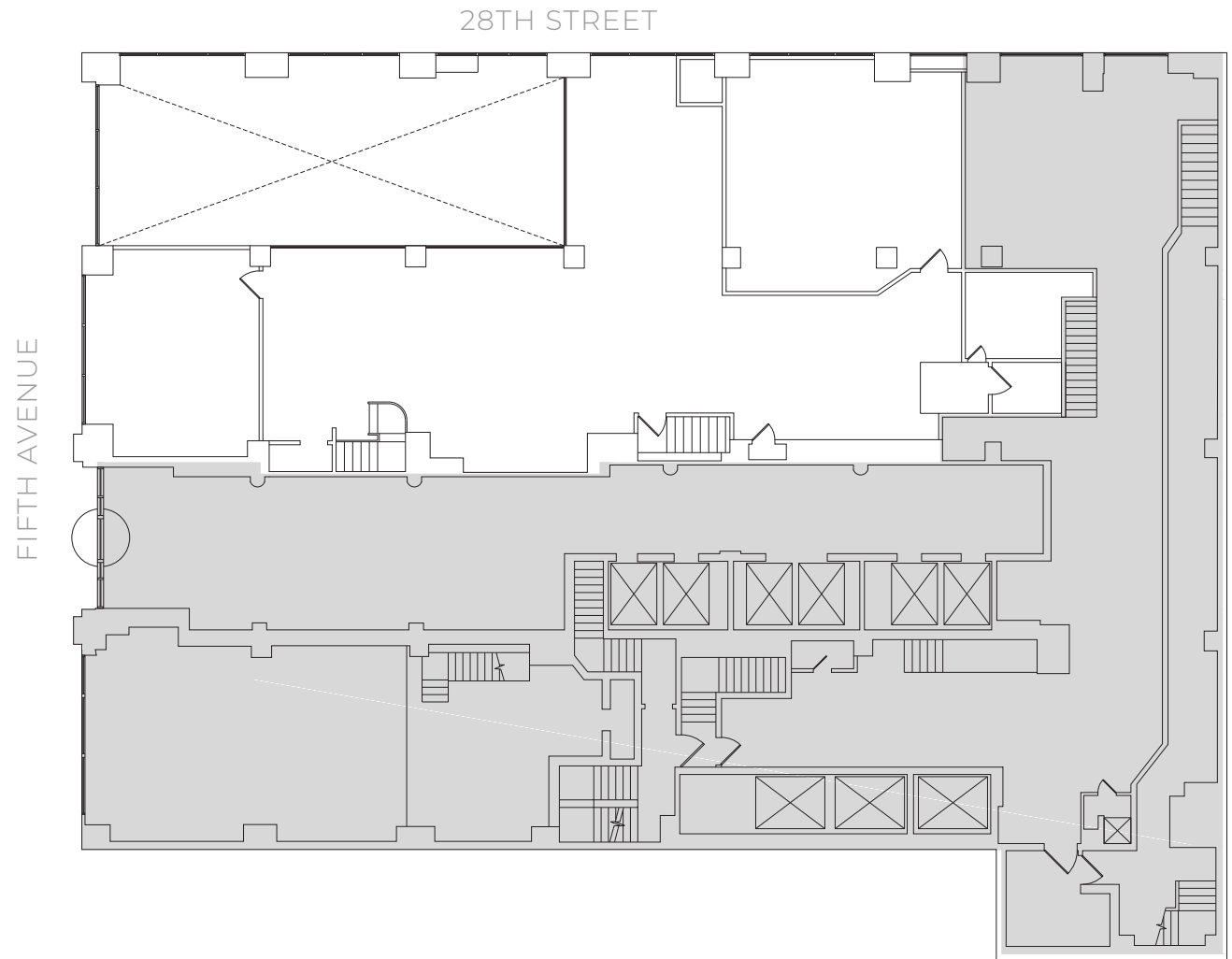
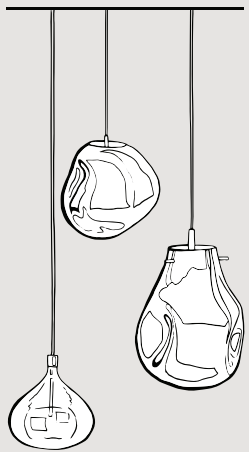
245

5TH AVE

*M*ezzanine

Size:
3,419 SF

Ceiling Height:
9'2" floor to ceiling



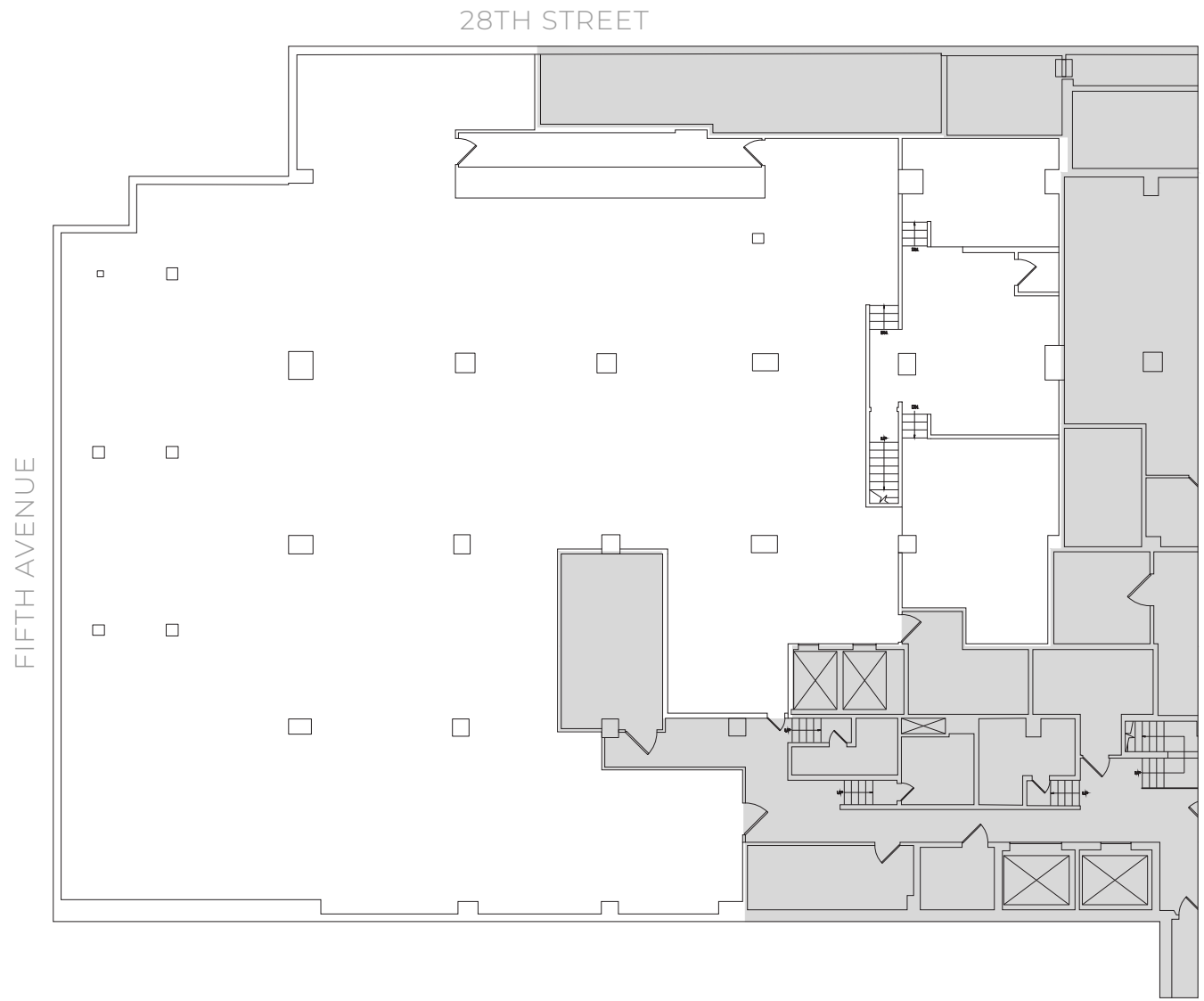
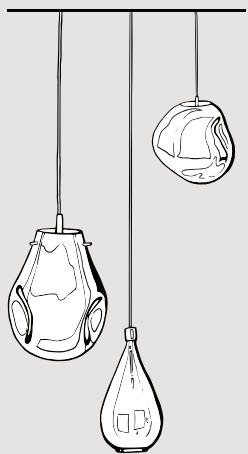
245

5TH AVE

Lower Level

Size:
8,924 SF

Ceiling Height:
9'2" floor to ceiling



245

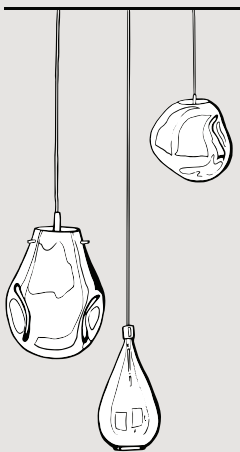
5TH AVE

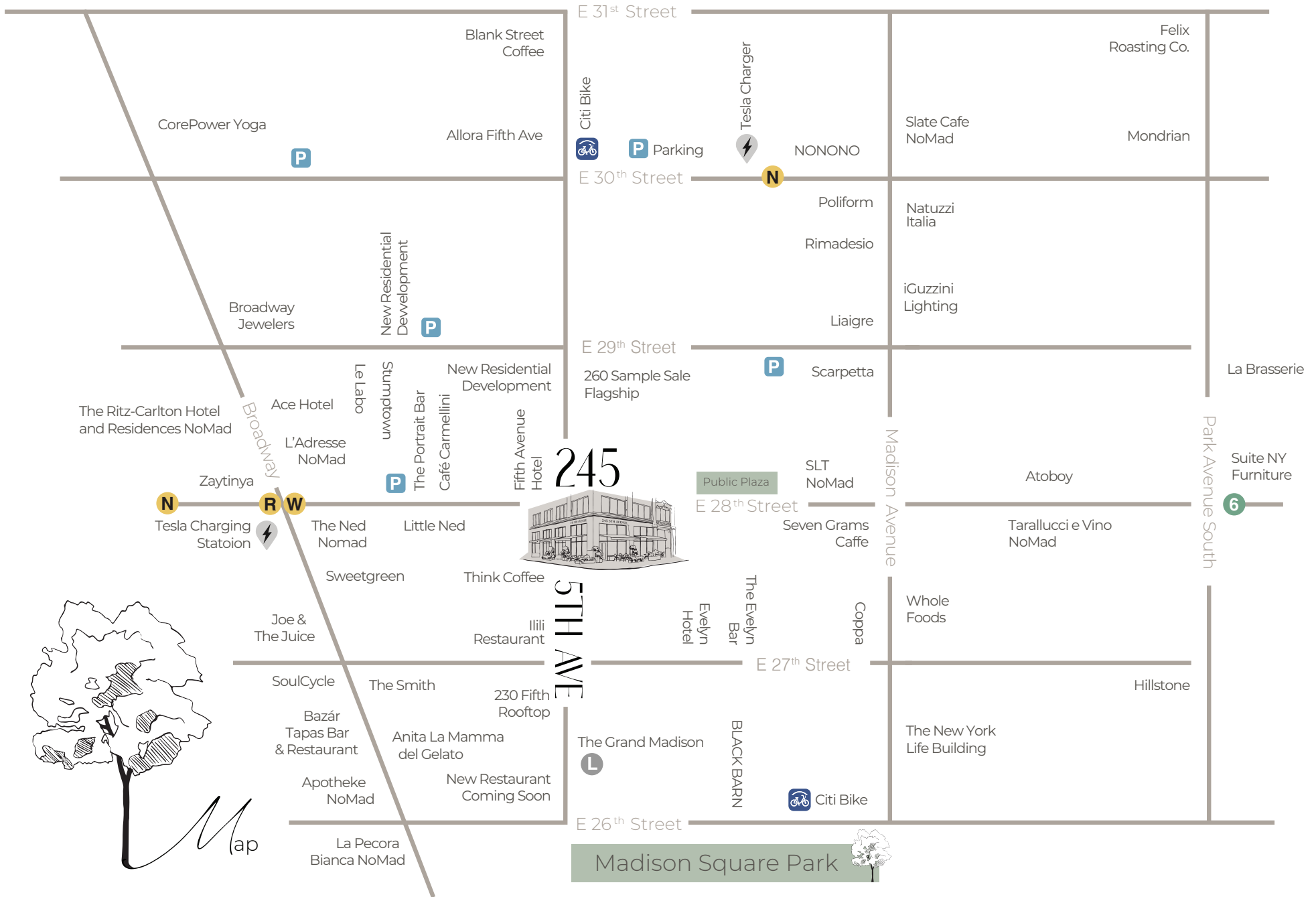
2nd Floor

Size:
9,925 SF

**OPTIONAL

Ceiling Height:
11'3" floor to ceiling





245

5TH AVE

Madison Square Park

Contact

Brad Schwarz

D 212.776.1290 | C 401.663.5923
bschwarz@lee-associates.com

Olivia Hwang

D 212.776.1238 | C 908.770.7701
ohwang@lee-associates.com

Gregg Weisser

D 212.808.4000 | C 917.843.3773
gregg@moiniangroup.com



MOINIAN

3 COLUMBUS CIRCLE, 26TH FLOOR
NEW YORK, NY 10019

212.808.4000 | MOINIAN.COM

