

PROPERTY FOR SALE

200 LEVITTOWN PARKWAY

Hicksville, New York 11801

LISTING DATA

GROUND FLOOR: 6,000 SF

BASEMENT: 6,000 SF

CEILING HEIGHTS: 10 FT

FEATURES

- Full basement has ceiling tiles
- Equipped kitchenette
- 2 handicap accessible restrooms on each floor

ASKING PRICE

\$2,500,000

For more information, please contact:

Kelly KouKou

kkoukou@lee-associates.com

D 212.776.1280

C 516.835.7833

Jessica Cohen

jcohen@lee-associates.com

C 917.691.9482

All information furnished regarding property for sale, rental or financing is from sources deemed reliable, but no warranty or representation is made to the accuracy thereof and same is submitted to errors, omissions, change of price, rental or other conditions prior to sale, lease or financing or withdrawal without notice. No liability of any kind is to be imposed on the broker herein.

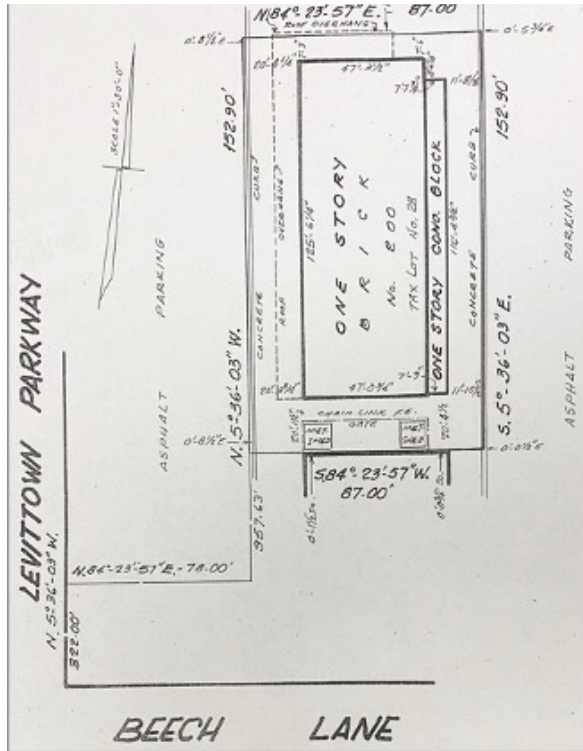


PROPERTY FOR SALE

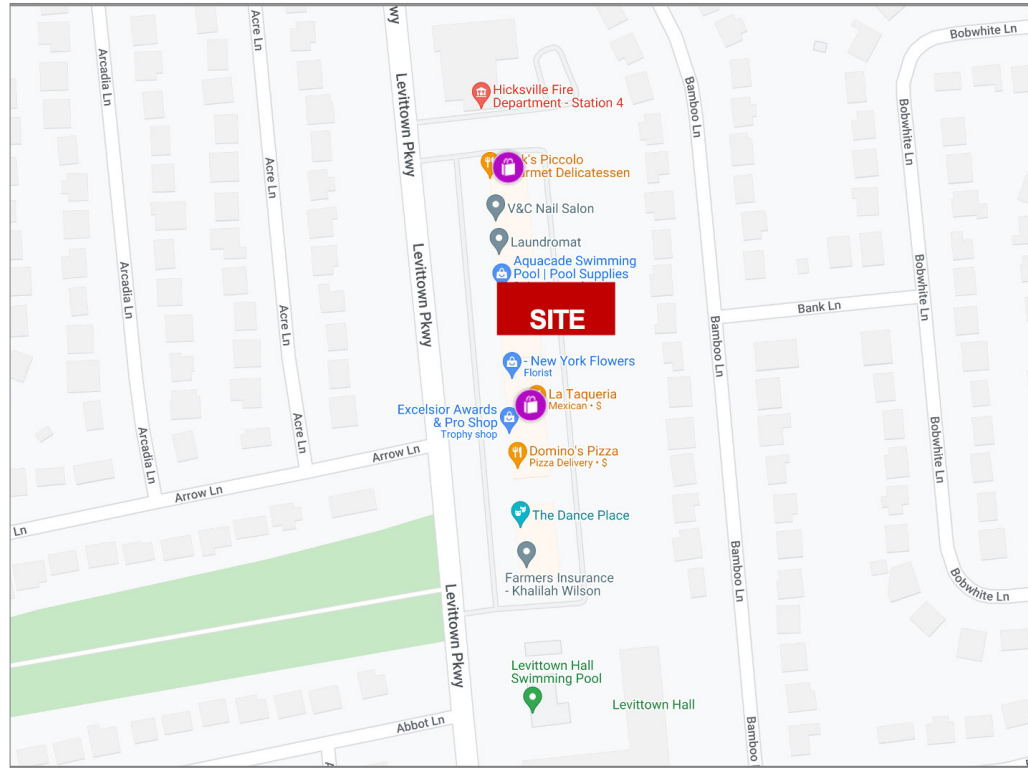
200 LEVITTOWN PARKWAY

Hicksville, New York 11801

FLOOR PLAN



AREA MAP



For more information, please contact:

Kelly Koukou

kkoukou@lee-associates.com

D 212.776.1280

C 516.835.7833

Jessica Cohen

jcohen@lee-associates.com

C 917.691.9482

All information furnished regarding property for sale, rental or financing is from sources deemed reliable, but no warranty or representation is made to the accuracy thereof and same is submitted to errors, omissions, change of price, rental or other conditions prior to sale, lease or financing or withdrawal without notice. No liability of any kind is to be imposed on the broker herein.