

UES Retail - All Uses Considered

1656 **THIRD AVENUE**

Between E 92nd and E 93rd Streets

THE SPACE

1,500 sf
Ground Floor

500 sf
Basement

25 feet of frontage
On Third Avenue

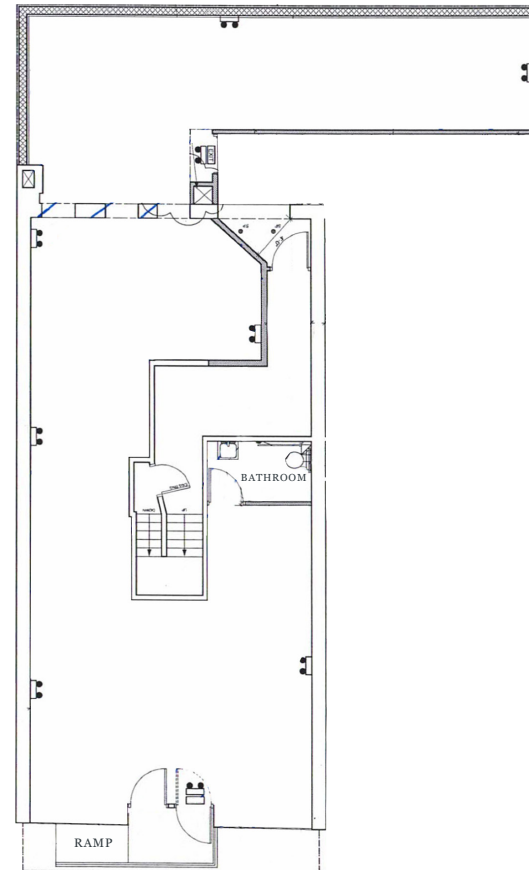
10 feet
Ceiling Heights

COMMENTS

Turn-Key Preschool Space

Dense Residential Neighborhood

All Uses Considered



FOR MORE INFORMATION PLEASE CONTACT:

Brad Schwarz

Executive Managing Director & Principal
212.776.1290
bschwarz@lee-associates.com

Uemgee 'Olivia' Hwang

Senior Managing Director
212.776.1238
ohwang@lee-associates.com

LEE & ASSOCIATES
COMMERCIAL REAL ESTATE SERVICES

All information supplied is from sources deemed reliable and is furnished subject to errors, omissions, modifications, removal of the listing from sale or lease, and to any listing conditions, including the rates and manner of payment of commissions for particular offerings imposed by principals or agreed by this Company, the terms of which are available to principals or duly licensed brokers. Any square footage dimensions set forth are approximate.

The Area

Neighbors



Adolescent Health Center



1656 THIRD AVENUE

FOR MORE INFORMATION PLEASE CONTACT:

Brad Schwarz
Executive Managing Director & Principal
212.776.1290
bschwarz@lee-associates.com

Uemgee 'Olivia' Hwang
Senior Managing Director
212.776.1238
ohwang@lee-associates.com



All information supplied is from sources deemed reliable and is furnished subject to errors, omissions, modifications, removal of the listing from sale or lease, and to any listing conditions, including the rates and manner of payment of commissions for particular offerings imposed by principals or agreed by this Company, the terms of which are available to principals or duly licensed brokers. Any square footage dimensions set forth are approximate.