

94 WYTHE AVENUE

BETWEEN N 10TH AND N 11TH STREETS

LEASED

94

WYTHE AVENUE

BETWEEN N 10TH AND N 11TH STREETS



SIZE

3,750 SF

FRONTAGE

50'

CEILINGS

22.5'

ASKING RENT

Please Inquire

POSSESSION

Immediate



COMMENTS

- Former Kinfolk bar/nightlife spaces in the heart of Williamsburg's entertainment district, in close proximity to hotels
- Great frontage and ceiling heights
- Single-story buildings
- Potential to brand buildings
- Automatic roll-up gates allow for open-air interior space

NEIGHBORS

- Wythe Hotel, William Vale Hotel, Hoxton Hotel, McCarren Hotel & Pool, Le Crocodile, Brooklyn Brewery, Brooklyn Bowl, Le Crocodile, Hatchets and Hops, Summerly, Klein's, The Whiskey Shop/Annex, Kent Ale House, Suitsupply, Du's Donuts, Westlight, Leuca, Allwise Meadery, Harvey, Seven Seeds

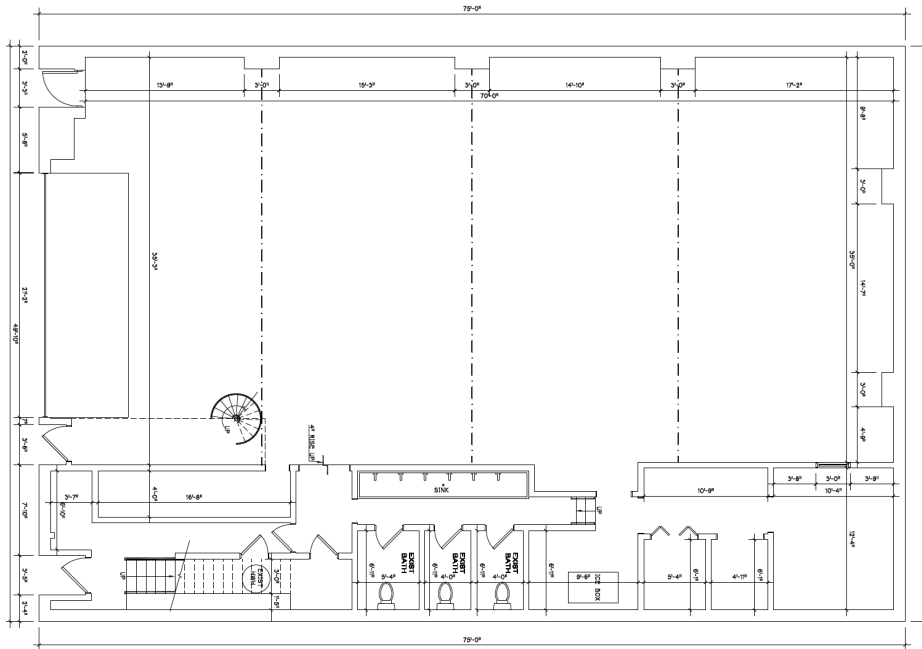
94

WYTHE AVENUE

BETWEEN N 10TH AND N 11TH STREETS

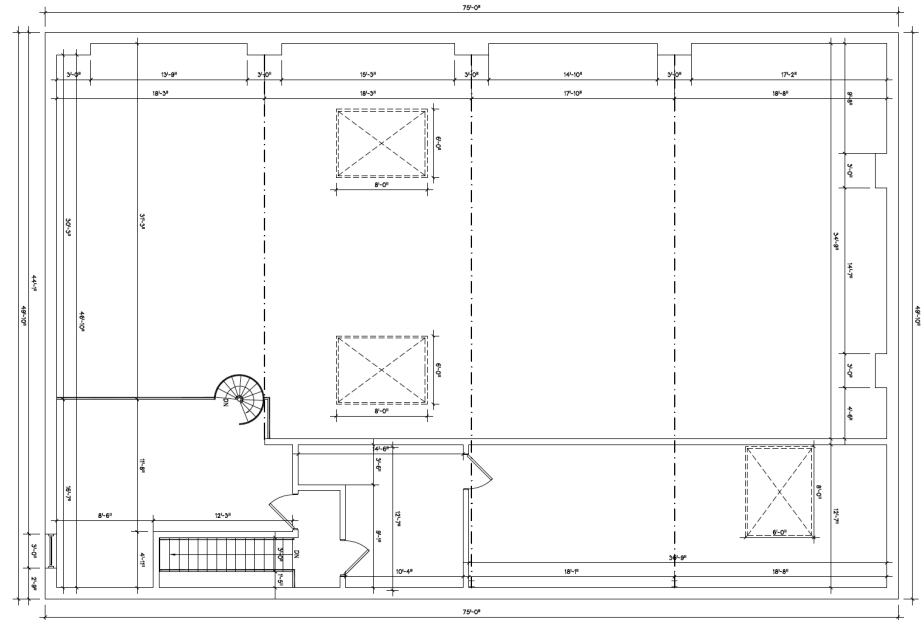
FIRST FLOOR

3,750 SF



MEZZANINE

1,200 SF



FOR MORE INFORMATION, PLEASE CONTACT:

GARRY STEINBERG

EXECUTIVE MANAGING DIRECTOR & PRINCIPAL

212.776.1285

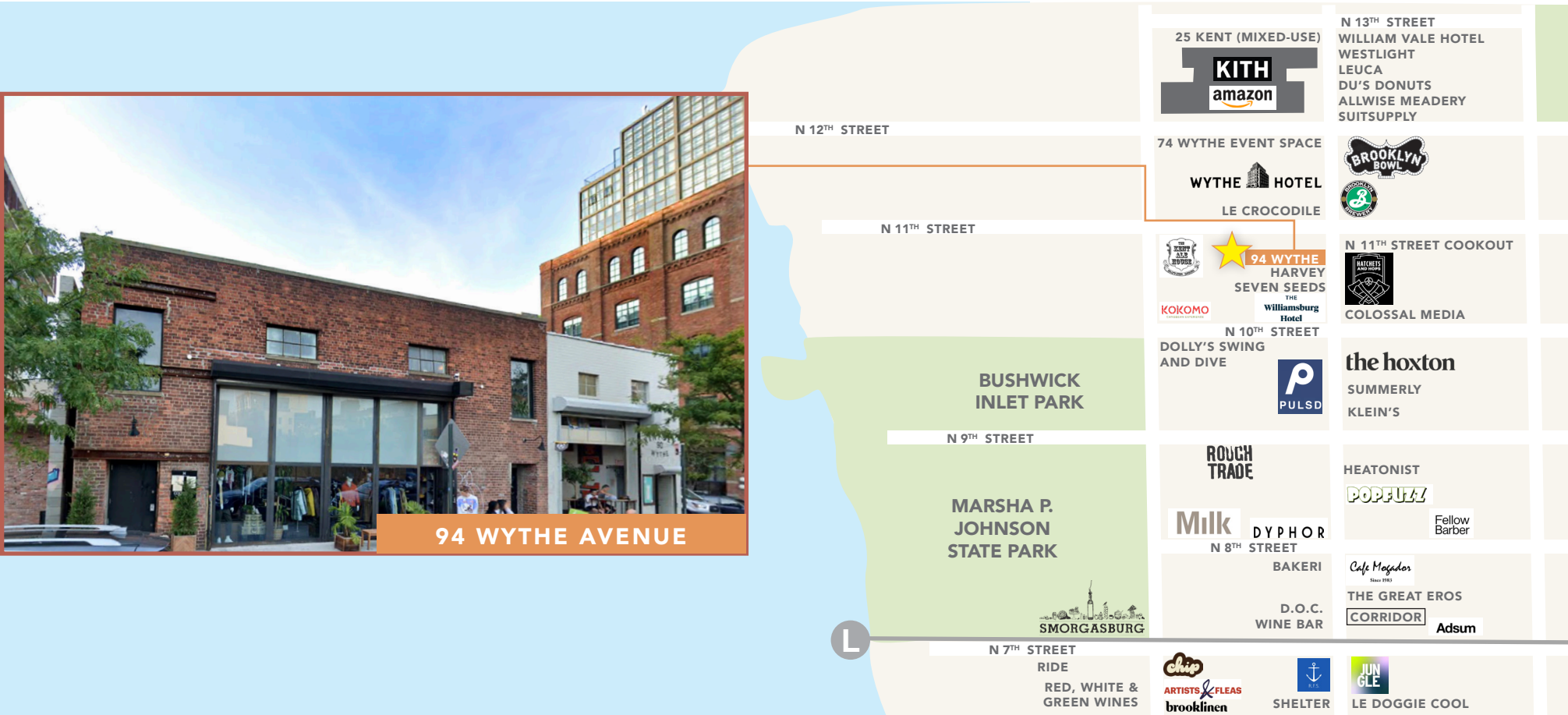
gsteinberg@lee-associates.com

94 WYTHE AVENUE

BETWEEN N 10TH AND N 11TH STREETS



94 WYTHE AVENUE



FOR MORE INFORMATION, PLEASE CONTACT:

GARRY STEINBERG

EXECUTIVE MANAGING DIRECTOR & PRINCIPAL

212.776.1285

gsteinberg@lee-associates.com