

THE RETAIL AT

295

FIFTH AVENUE



TWO CORNER OPPORTUNITIES
ON 30TH & 31ST STREETS



295
FIFTH AVENUE

EAST 31ST STREET CORNER RENDERING



295
FIFTH AVENUE

GROUND FLOOR | ENTIRE SPACE

CEILING HEIGHTS: 21 FT

RETAIL A

13,356 SF

31ST STREET



30TH STREET

RETAIL B

7,737 SF

FIFTH AVENUE

295
FIFTH AVENUE

BASEMENT FLOOR PLANS

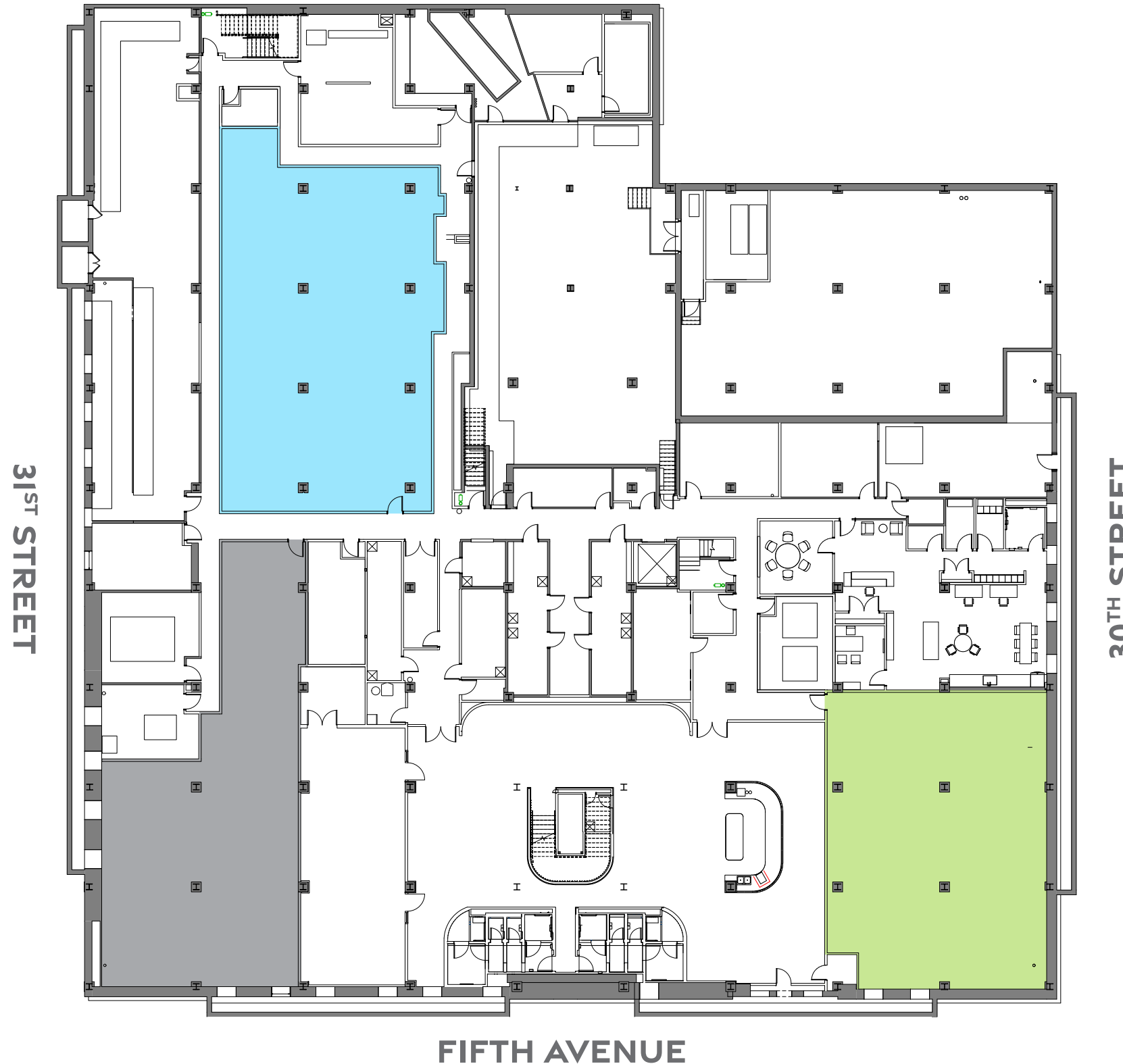
RETAIL A STORAGE

3,219 SF

RETAIL A STORAGE

2,631 SF

RETAIL A STORAGE CAN BE
LEASED TOGETHER.



RETAIL B STORAGE

2,637 SF

295
FIFTH AVENUE

GROUND FLOOR | POTENTIAL DIVISIONS

RETAIL A - INLINE DIVISION

5,938 SF

RETAIL A - CORNER DIVISION

6,726 SF



RETAIL B - INLINE DIVISION

4,022 SF

RETAIL B - CORNER DIVISION

3,715 SF

295
FIFTH AVENUE

EAST 30TH STREET CORNER RENDERING

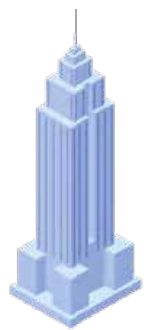


295
FIFTH AVENUE

EAST 30TH STREET INLINE RENDERING



295 FIFTH AVENUE



A few steps away from the Empire State Building and Madison Square Park, which attract 4 million people and 3.5 million people respectively per year to the area.



295 Fifth Avenue is centrally located and near all transportation hubs:

- 5-10 minute walk to Penn Station and PATH Train
- 10-15 minute walk to Grand Central Terminal



295 Fifth Avenue has parking for over 70 bikes

DEMOGRAPHICS

(Represents a 5-minute walk from 295 Fifth Avenue)

2022 AREA DEMOGRAPHICS



13,984

Population



8,997

Housing Units



\$171,175

Median Household Income



856,307 SF

Under Construction

BUSINESS SUMMARY



1,100

Retail Tenants
Employees



75,942

Total Employees



27,519,965

Office SF

LARGEST NEARBY OFFICE TENANTS

NYU LANGONE HEALTH
ONE PARK AVENUE
648,607 SF

LINKEDIN
350 FIFTH AVENUE
453,504 SF

AMAZON
7 W 34TH STREET
419,958 SF

TOURISM/HOTELS



7,510 rooms
45 hotels

Hotels



950 rooms
3 hotels

Under Const
(2023 completion)



TEXTILE BUILDING

295
FIFTH AVENUE

295
FIFTH

295
FIFTH

PETER BRAUS
MANAGING PRINCIPAL
pbraus@lee-associates.com
212.776.1203

MARK KAPNICK
EXECUTIVE MANAGING
DIRECTOR & PRINCIPAL
mkapnick@lee-associates.com
212.776.1230

BRETT TRAUSSI
HOSPITALITY SPECIALIST
btraussi@lee-associates.com
917.334.5122

JP SUTRO
EXECUTIVE MANAGING
DIRECTOR
jsutro@lee-associates.com
212.776.1274

MO DWECK
DIRECTOR
mdweck@lee-associates.com
212.776.1246

 **LEE &
ASSOCIATES**
COMMERCIAL REAL ESTATE SERVICES