

# 1444 EAST BOSTON POST ROAD



## LEASING CONTACT

**CORY GAHR**

212.776.1271

[cgahr@lee-associates.com](mailto:cgahr@lee-associates.com)

## SALES CONTACTS

**BEN TAPPER**

646.658.7334

[btapper@lee-associates.com](mailto:btapper@lee-associates.com)

**SEAN SLATTERY**

646.723.4011

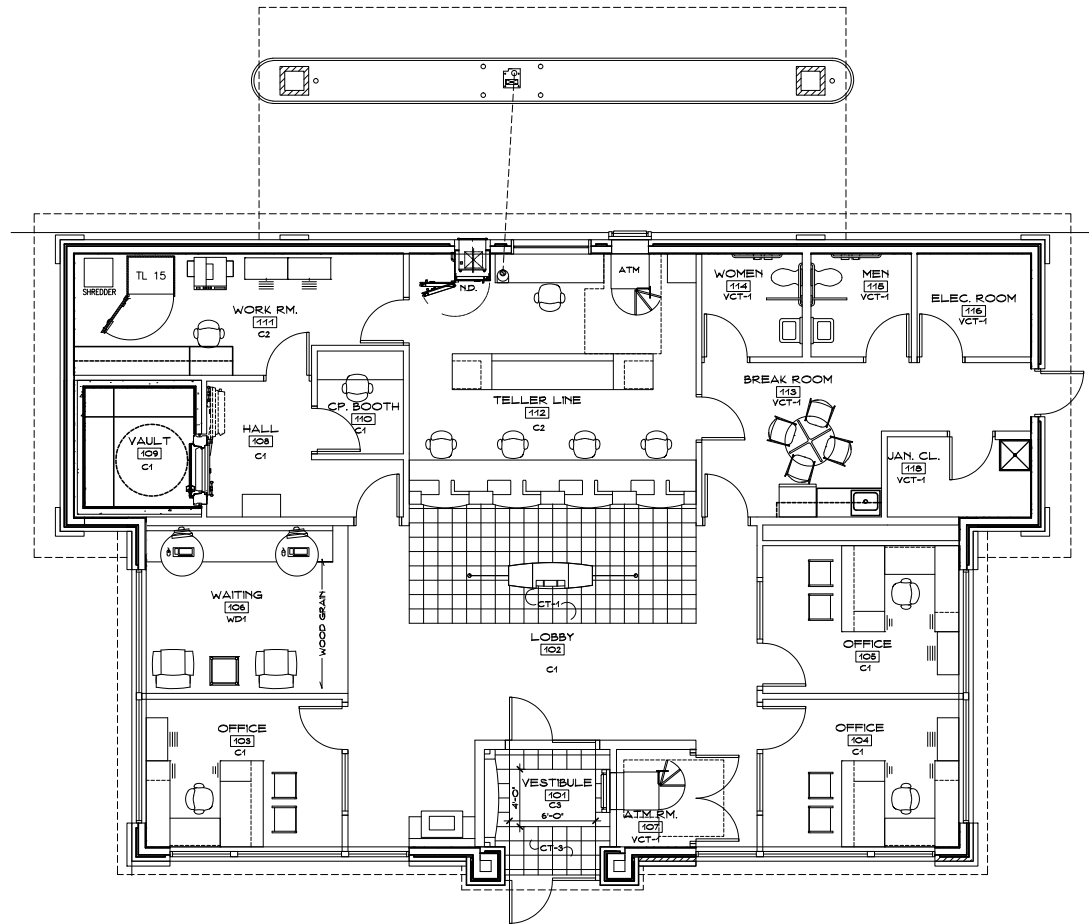
[sslattery@lee-associates.com](mailto:sslattery@lee-associates.com)





# FOR LEASE OR SALE

1444 EAST BOSTON POST ROAD, MAMARONECK, NY 10543



EAST BOSTON POST ROAD

## PROPERTY OVERVIEW

<b>BLOCK/LOT</b>	155.37 - 1 - 49
<b>LOT SIZE</b>	0.51 Acres
<b>GROSS BUILDING</b>	2,790 Sq. Ft.
<b>ZONING</b>	C-1 COMM
<b>PROPERTY CLASS</b>	Drive-In Branch Bank (462)
<b>2022-2023 RE TAXES</b>	\$93,862



### LEASING CONTACT

**CORY GAHR**  
212.776.1271  
cgahr@lee-associates.com

### SALES CONTACTS

**BEN TAPPER**  
646.658.7334  
btapper@lee-associates.com

**SEAN SLATTERY**  
646.723.4011  
sslattery@lee-associates.com



# FOR LEASE OR SALE

1444 EAST BOSTON POST ROAD, MAMARONECK, NY 10543



## LEASING CONTACT

**CORY GAHR**

212.776.1271

cgahr@lee-associates.com

## SALES CONTACTS

**BEN TAPPER**

646.658.7334

btapper@lee-associates.com

**SEAN SLATTERY**

646.723.4011

sslattery@lee-associates.com

**LEE & ASSOCIATES**  
COMMERCIAL REAL ESTATE SERVICES