

# Prime UES Divisible Corner

# 1660 **THIRD AVENUE**

Southwest Corner of 93rd Street & Third Avenue

## THE SPACES

### SPACE A

**600 sf** (300 sf basement)  
**15 feet of frontage**

### SPACE B

**1,900 sf** (plus basement)  
**25 feet of frontage**  
On Third Avenue  
**60 feet of frontage**  
On 93rd Street

## COMMENTS

Divisible  
Motivated Landlord  
Formerly Crank Cycling Studio  
Previously a restaurant  
Dense Residential Neighborhood  
All uses considered



FOR MORE INFORMATION PLEASE CONTACT:

**Brad Schwarz**  
Executive Managing Director & Principal  
212.776.1290  
bschwarz@lee-associates.com

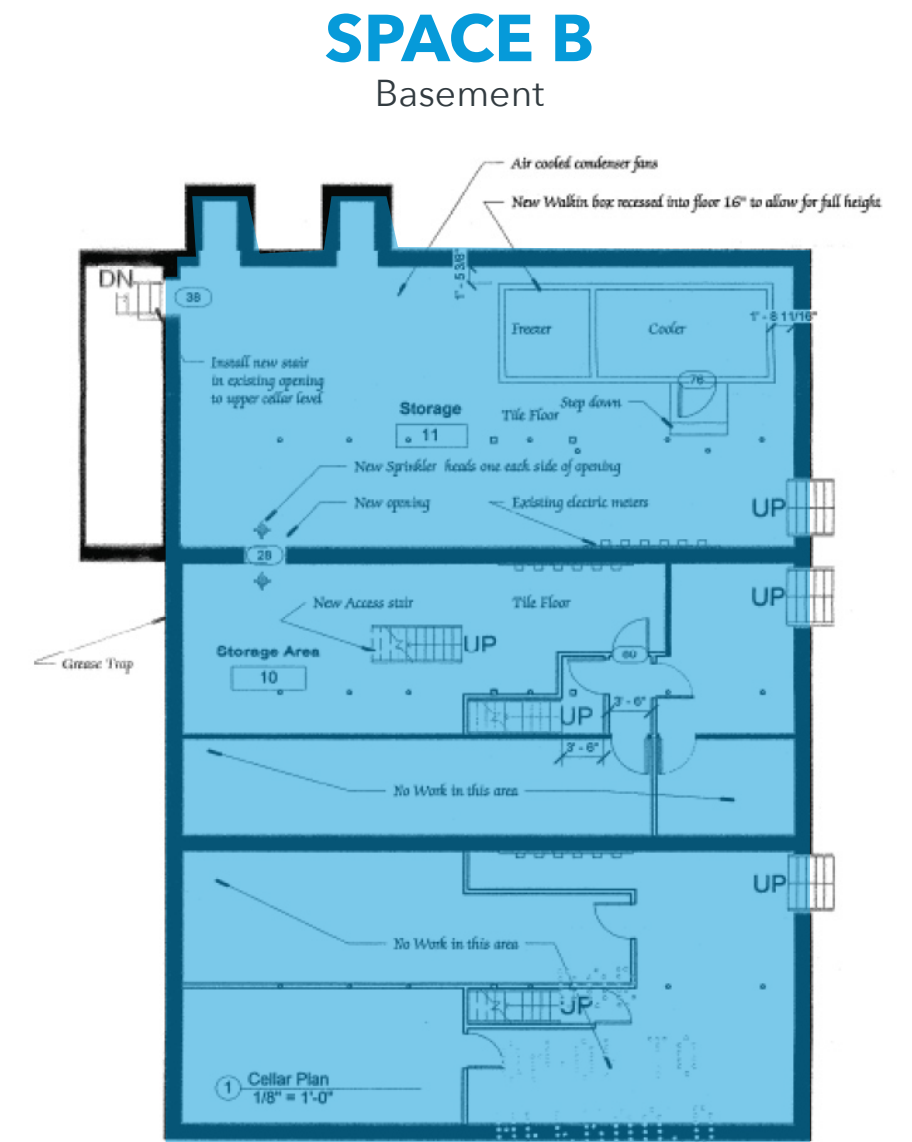
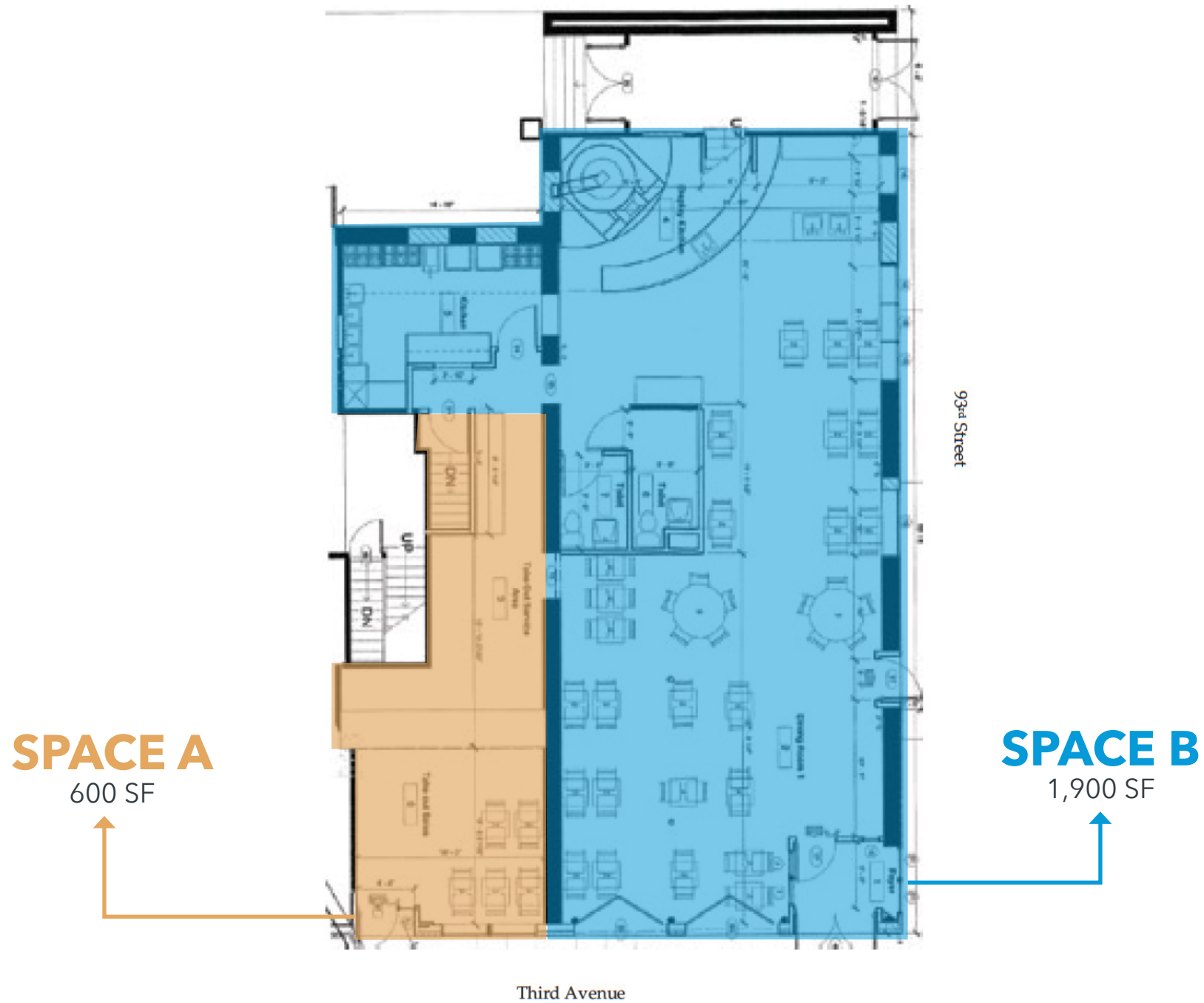
**Uemgee 'Olivia' Hwang**  
Senior Managing Director  
212.776.1238  
ohwang@lee-associates.com

**LEE & ASSOCIATES**  
COMMERCIAL REAL ESTATE SERVICES

All information supplied is from sources deemed reliable and is furnished subject to errors, omissions, modifications, removal of the listing from sale or lease, and to any listing conditions, including the rates and manner of payment of commissions for particular offerings imposed by principals or agreed by this Company, the terms of which are available to principals or duly licensed brokers. Any square footage dimensions set forth are approximate.

# Floor Plans

FROM PREVIOUS RESTAURANT



FOR MORE INFORMATION PLEASE CONTACT:

**Brad Schwarz**  
Executive Managing Director & Principal  
212.776.1290  
bschwarz@lee-associates.com

**Uemgee 'Olivia' Hwang**  
Senior Managing Director  
212.776.1238  
ohwang@lee-associates.com

**LEE & ASSOCIATES**  
COMMERCIAL REAL ESTATE SERVICES

All information supplied is from sources deemed reliable and is furnished subject to errors, omissions, modifications, removal of the listing from sale or lease, and to any listing conditions, including the rates and manner of payment of commissions for particular offerings imposed by principals or agreed by this Company, the terms of which are available to principals or duly licensed brokers. Any square footage dimensions set forth are approximate.

# The Area

## Neighbors



Adolescent Health Center



**1660 THIRD AVENUE**

FOR MORE INFORMATION PLEASE CONTACT:

**Brad Schwarz**  
Executive Managing Director & Principal  
212.776.1290  
bschwarz@lee-associates.com

**Uemgee 'Olivia' Hwang**  
Senior Managing Director  
212.776.1238  
ohwang@lee-associates.com



All information supplied is from sources deemed reliable and is furnished subject to errors, omissions, modifications, removal of the listing from sale or lease, and to any listing conditions, including the rates and manner of payment of commissions for particular offerings imposed by principals or agreed by this Company, the terms of which are available to principals or duly licensed brokers. Any square footage dimensions set forth are approximate.