

# 6900

FOURTH AVENUE

SOUTHWEST CORNER OF 4TH AVENUE & BAY RIDGE AVENUE  
BROOKLYN, 11209

**ENTIRE SECOND FLOOR**




# 6900

## FOURTH AVENUE

SOUTHWEST CORNER OF 4TH AVENUE & BAY RIDGE AVENUE  
BROOKLYN, 11209

## ENTIRE SECOND FLOOR 8,800 SQUARE FEET

### COMMENTS

- Dedicated Entrance with Private Elevator
- 15+ Foot Ceiling Heights
- Heavy Electric
- 180' Wraparound Frontage
- Extraordinary Branding Opportunity
- Ideal for school, daycare, office, medical & most use.
- Previously Maimonides Bay Ridge Primary Care
- Nearby Bus Routes: B64 B9 B37
- Bay Ridge Ave  train on corner
- Easy Access to the Gowanus Expressway

### NEIGHBORS

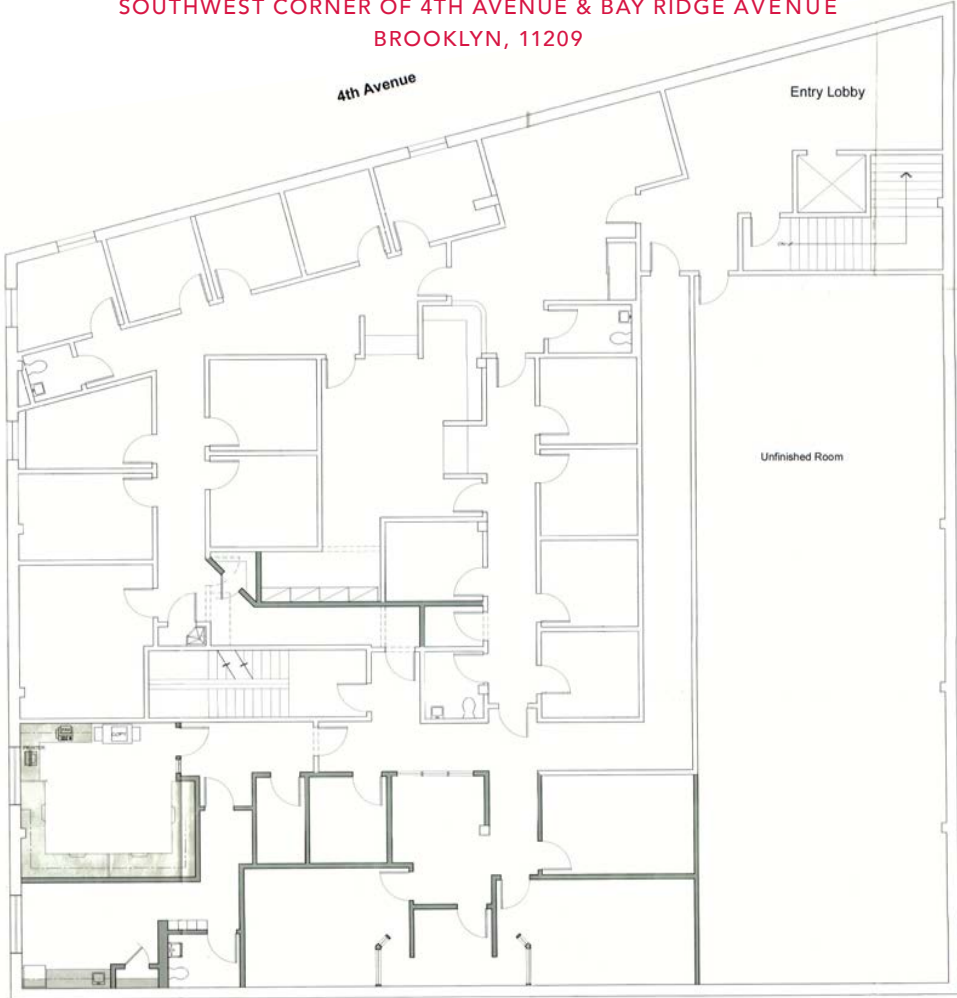
- High School of Telecommunication Arts and Technology
- PS 102 - The Bayview School
- Bay Ridge Prep - Upper School
- PS/IS 30 - Mary White Ovington School – K-8 STEAM curriculum
- PS 170 - The Ralph A Fabrizio School
- Owl's Head Park
- Leif Ericsson Park Greenway
- NYU Langone Ambulatory Care Center
- Our Lady of Angels – Roman Catholic Church
- Vibrant Brooklyn Neighborhood
- Many Nearby Restaurants



# 6900

## FOURTH AVENUE

SOUTHWEST CORNER OF 4TH AVENUE & BAY RIDGE AVENUE  
BROOKLYN, 11209



FOR MORE INFORMATION, PLEASE CONTACT EXCLUSIVE AGENTS:

**GARRY STEINBERG**

EXECUTIVE MANAGING DIRECTOR & PRINCIPAL

212.776.1285

[gsteinberg@lee-associates.com](mailto:gsteinberg@lee-associates.com)

**RICHARD KAVE**

EXECUTIVE MANAGING DIRECTOR

212.776.1291

[rkave@lee-associates.com](mailto:rkave@lee-associates.com)



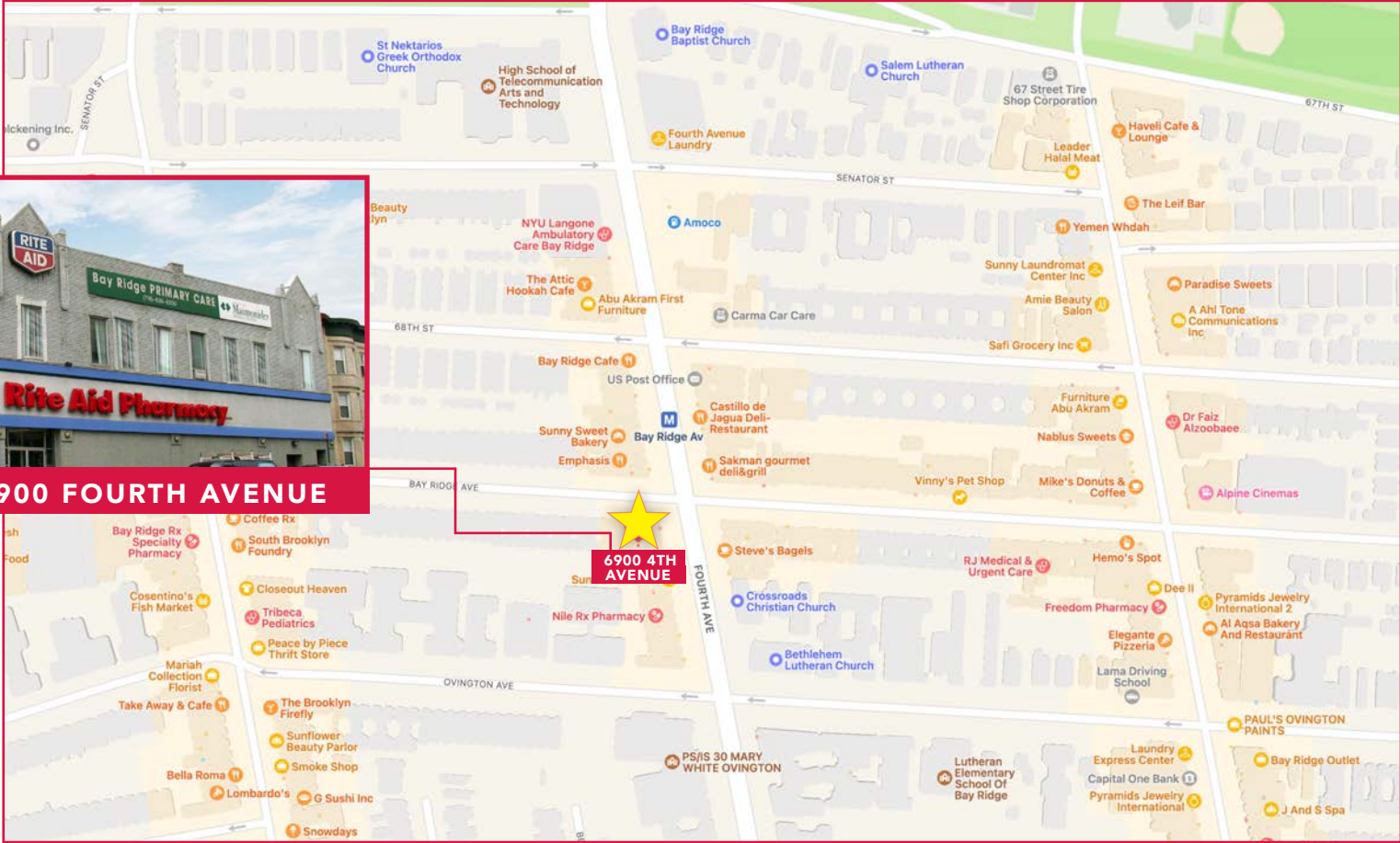
All information supplied is from sources deemed reliable and is furnished subject to errors, omissions, modifications, removal of the listing for sale or lease, and to any listing conditions, including the rates and manner of payment of commissions for particular offerings imposed by principals or agreed by this Company, the terms of which are available to principals or duly licensed brokers. Any square footage dimensions set forth are approximate.

# 6900 FOURTH AVENUE

SOUTHWEST CORNER OF 4TH AVENUE & BAY RIDGE AVENUE  
BROOKLYN, 11209



**6900 FOURTH AVENUE**



FOR MORE INFORMATION, PLEASE CONTACT EXCLUSIVE AGENTS:

**GARRY STEINBERG**

EXECUTIVE MANAGING DIRECTOR & PRINCIPAL  
212.776.1285  
gsteinberg@lee-associates.com

**RICHARD KAVE**

EXECUTIVE MANAGING DIRECTOR  
212.776.1291  
rkave@lee-associates.com



All information supplied is from sources deemed reliable and is furnished subject to errors, omissions, modifications, removal of the listing for sale or lease, and to any listing conditions, including the rates and manner of payment of commissions for particular offerings imposed by principals or agreed by this Company, the terms of which are available to principals or duly licensed brokers. Any square footage dimensions set forth are approximate.