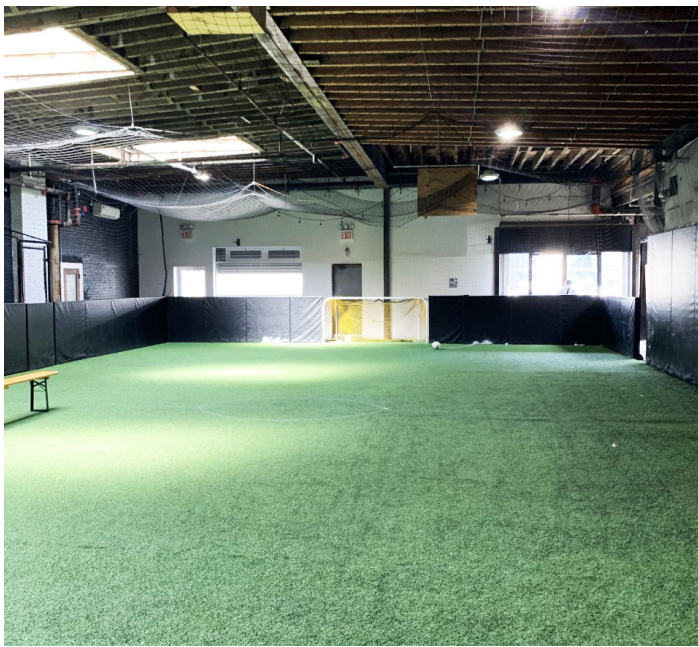


200

NORTH 14TH STREET

BETWEEN WYTHE AVENUE AND BERRY STREET





200

NORTH 14TH STREET

BETWEEN WYTHE AVENUE AND BERRY STREET

GROUND FLOOR
4,175 SF

FRONTAGE
56'

CEILINGS
Vaulted 16'

ASKING RENT
Please Inquire

POSSESSION
Immediate

COMMENTS

- Column Free and Single-story
- Authentic former Industrial building with exposed brick and wooden beams
- All uses considered

NEIGHBORS

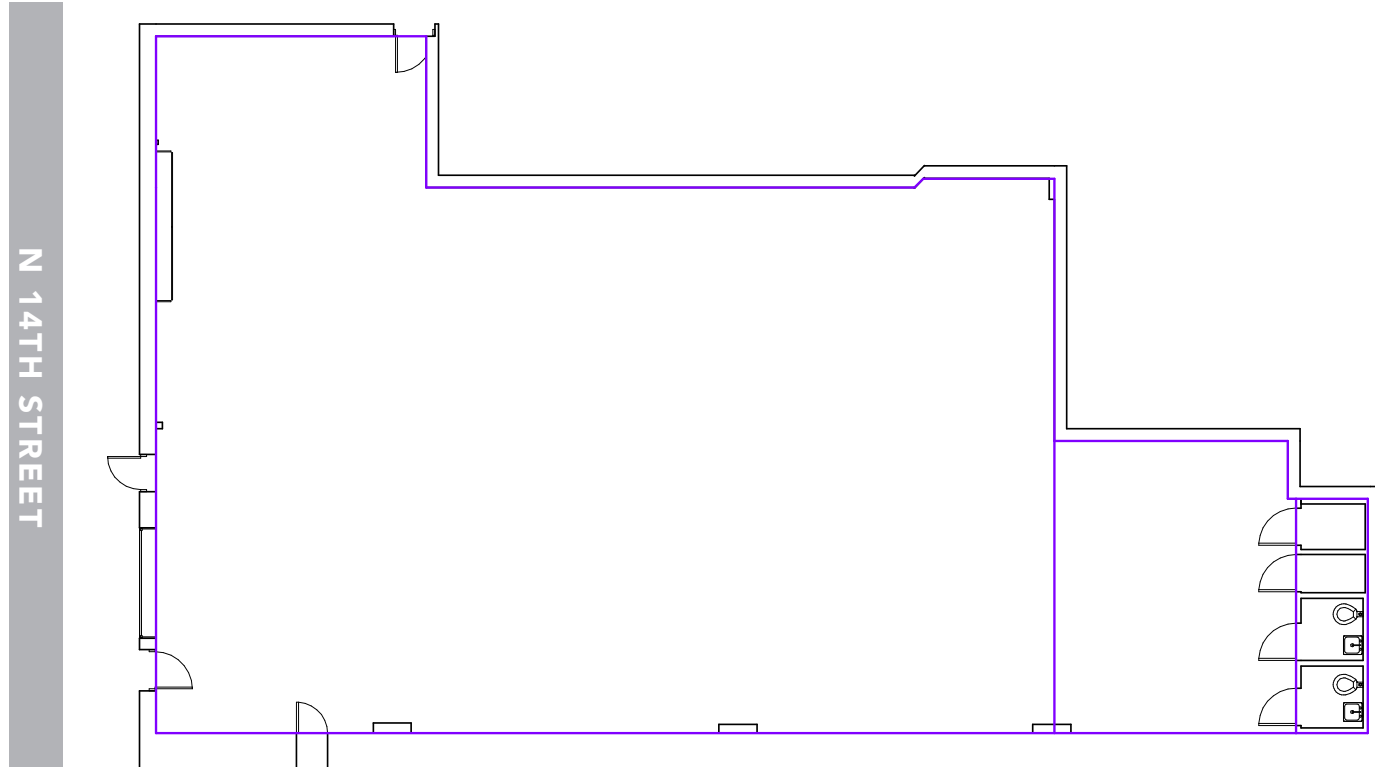
- Vital Climbing, Brooklyn Athletic Club, Berry Park, Bark Park by Freehold, McCarren Park, Upstate Stock, The Gutter, Wythe Hotel, William Vale Hotel, Williamsburg Hotel, McCarren Hotel & Pool, Brooklyn Brewery, Brooklyn Bowl



200

NORTH 14TH STREET

BETWEEN WYTHE AVENUE AND BERRY STREET



FOR MORE INFORMATION, PLEASE CONTACT:

GARRY STEINBERG

EXECUTIVE MANAGING DIRECTOR & PRINCIPAL

212.776.1285

gsteinberg@lee-associates.com

BRENDAN REICHENBACHER

DIRECTOR

212.776.1206

breichenbacher@lee-associates.com

200 NORTH 14TH STREET

BETWEEN WYTHE AVENUE AND BERRY STREET



FOR MORE INFORMATION, PLEASE CONTACT:

GARRY STEINBERG
EXECUTIVE MANAGING DIRECTOR & PRINCIPAL
212.776.1285
gsteinberg@lee-associates.com

BRENDAN REICHENBACHER
DIRECTOR
212.776.1206
breichenbacher@lee-associates.com