

# Ground Floor Retail Opportunity - Turtle Bay

## 959 SECOND AVENUE

Just off the corner of  
2<sup>nd</sup> Ave & 51<sup>st</sup> Street

- Approximately 950 SF
- Basement - Approx. 600 SF
- Built Restaurant
- Venting/Gas in Place
- Prime Midtown
- Steps from E, M & 6 Lines
- On Second Avenue
- Former Wine Bar



### Brad Schwarz

Executive Managing Director & Principal  
212.776.1290  
bschwarz@lee-associates.com

### Olivia Hwang

Senior Managing Director  
212.776.1238  
ohwang@lee-associates.com

# 959 SECOND AVENUE



Lexington & 53rd St Subway



**959 SECOND AVENUE**

Greenacre Park  
Intimate park with a waterfall & cafe



## In the Neighborhood

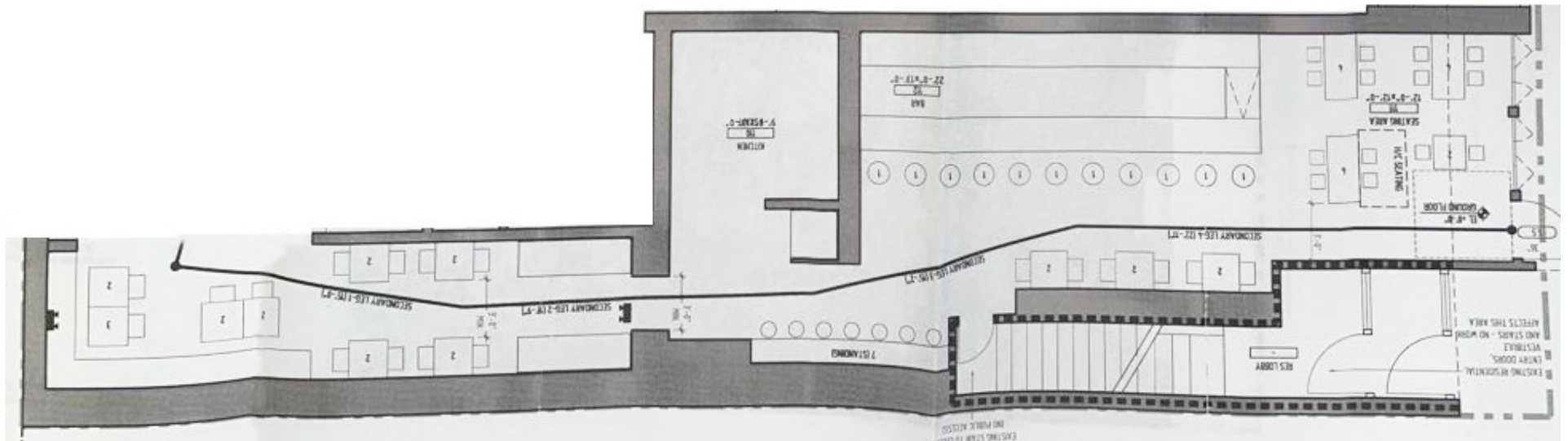


**Brad Schwarz**  
Executive Managing Director & Principal  
212.776.1290  
bschwarz@lee-associates.com

**Olivia Hwang**  
Senior Managing Director  
212.776.1238  
jficelman@lee-associates.com



# 959 SECOND AVENUE



## Partial Ground Floor 950 SF