

**\$2/SF
BROKER
BONUS!**

As exclusive agents, we are pleased to announce the following prime space for sublease:

Twelve Fifty One
**AVENUE OF THE
AMERICAS**

Partial 41st floor | 4,896 square feet



Twelve Fifty One

**AVENUE OF THE
AMERICAS**



The Space

Partial 41st floor

4,896 square feet

Plug & play space with furniture included

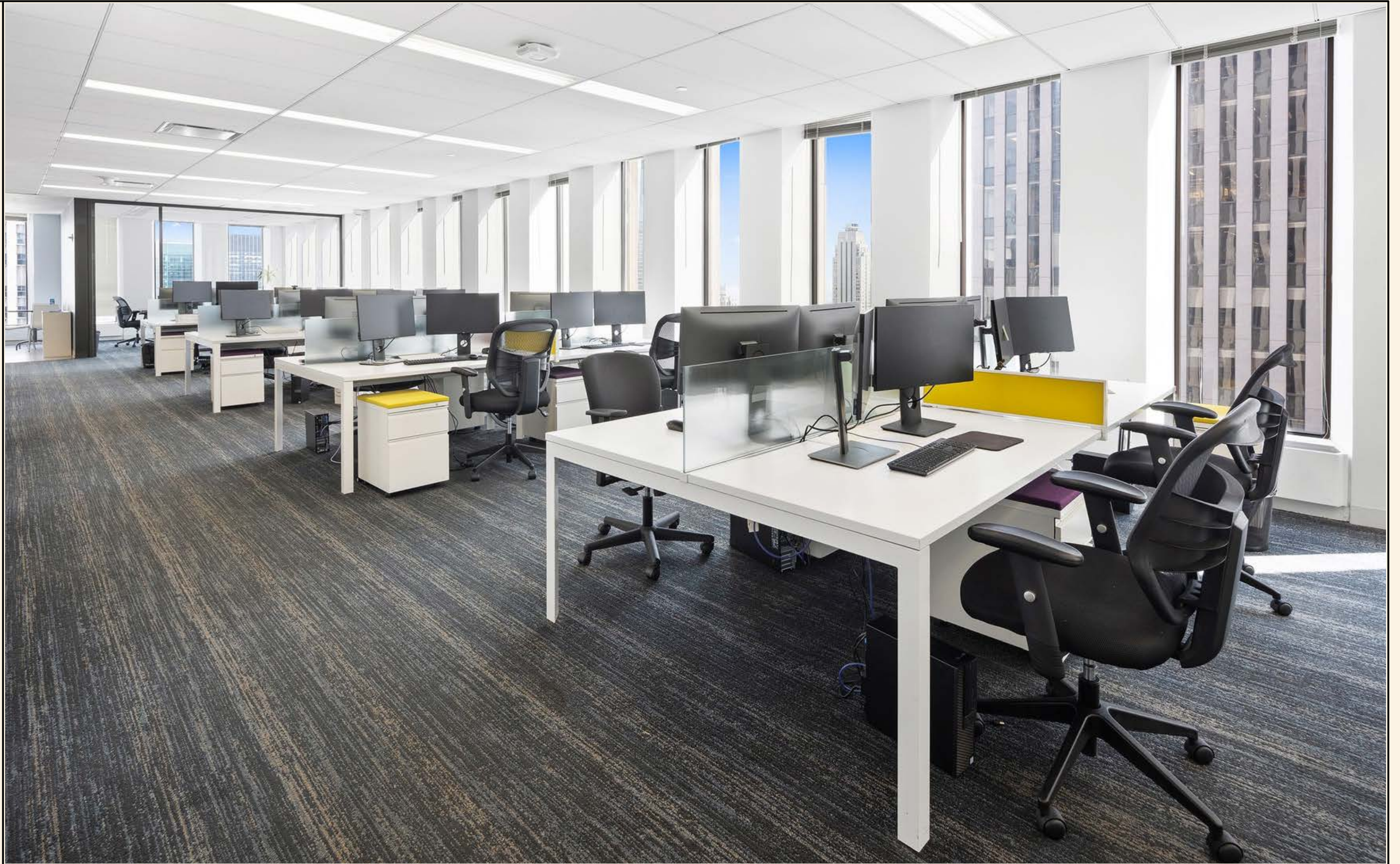
Corner unit with phenomenal light and views facing South & East

Unit is currently built with 25 windows, 1 glass office, 1 glass conference room, 1 wet pantry, and 41 desks in the open area

Sublease term through 2/29/2032

Twelve Fifty One

**AVENUE OF THE
AMERICAS**



Twelve Fifty One

AVENUE OF THE AMERICAS



Twelve Fifty One

AVENUE OF THE AMERICAS



Twelve Fifty One

AVENUE OF THE AMERICAS

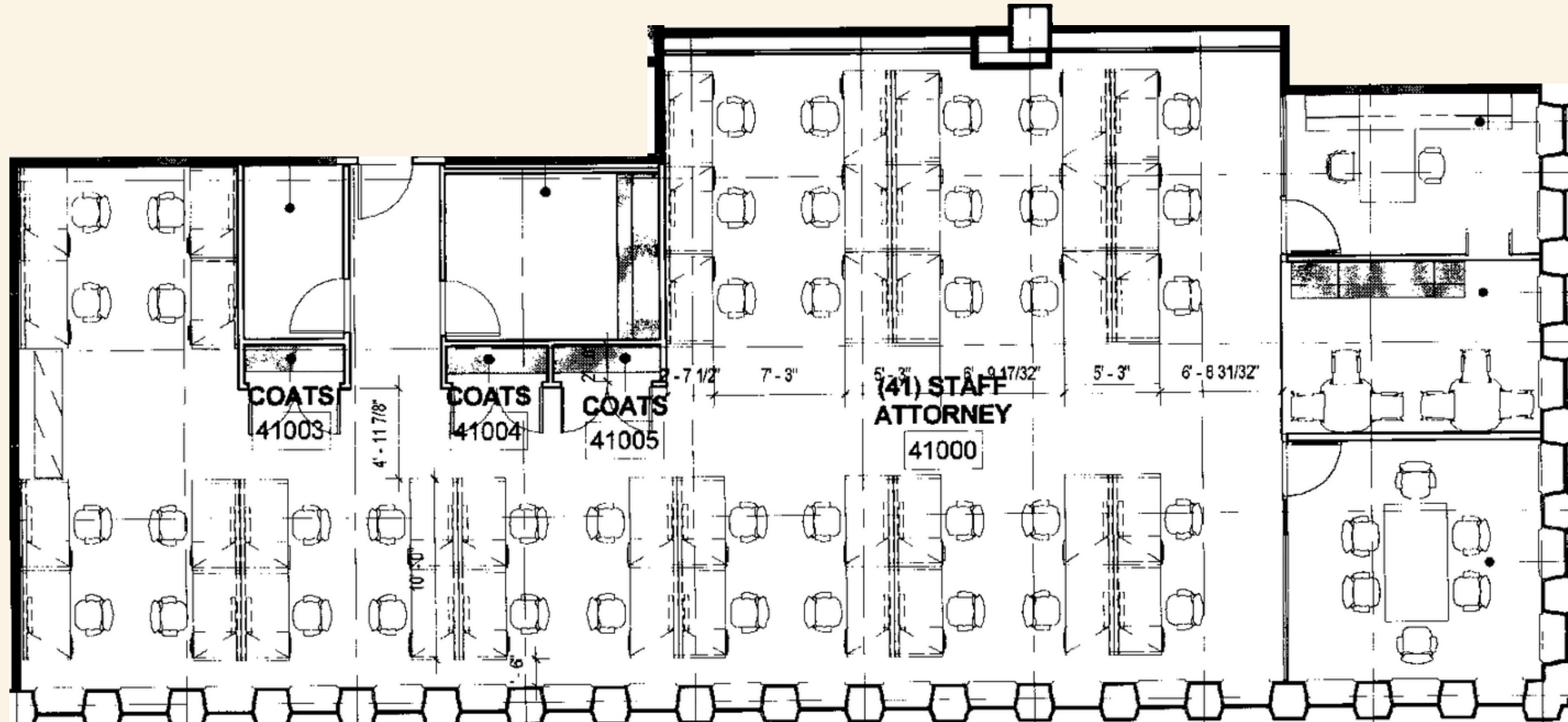


Twelve Fifty One

AVENUE OF THE AMERICAS

Actual Floor Plan

4,896 SF

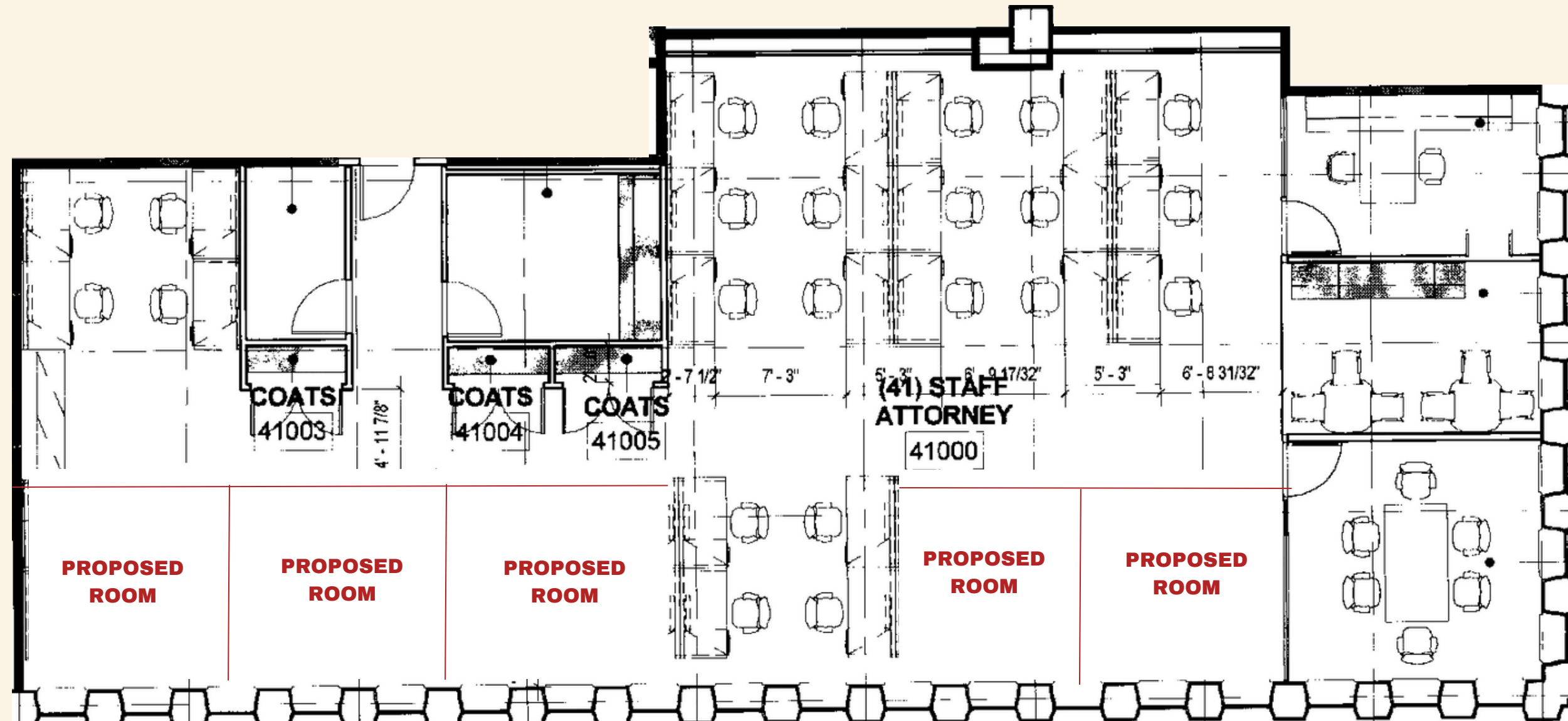


Twelve Fifty One

AVENUE OF THE AMERICAS

Proposed Floor Plan

4,896 SF





For more information, please contact:

JUSTIN MYERS
EXEC. MANAGING DIRECTOR & PRINCIPAL
JMYERS@LEE-ASSOCIATES.COM
212.776.1281

DENNIS SOMECK
EXEC. MANAGING DIRECTOR & PRINCIPAL
DSOMECK@LEE-ASSOCIATES.COM
212.776.1270

ROBERT KOSLOW
SENIOR MANAGING DIRECTOR
RKOSLOW@LEE-ASSOCIATES.COM
212.776.1248

RACHEL KIRKHAM
ASSOCIATE
RKIRKHAM@LEE-ASSOCIATES.COM
212.776.1279

All information supplied is from sources deemed reliable and is furnished subject to errors, omissions, modifications, removal of the listing from sale or lease, and to any listing conditions, including the rates and manner of payment of commissions for particular offerings imposed by principals or agreed by this Company, the terms of which are available to principals or duly licensed brokers. Any square footage dimensions set forth are approximate.

