

# 20,000 SQ. FT OF RETAIL + 10,000 SQ. FT OF SUB STORAGE BASEMENT AVAILABLE FOR LEASE IN SOHO



BETWEEN BROOME AND SPRING STREETS

**515 BROADWAY**

AS THE EXCLUSIVE AGENTS FOR THE OWNER, WE ARE PLEASED TO OFFER THIS GORGEOUS SPACE IN SOHO.

## SPACE INFORMATION

**AVAILABLE FLOORS:** 10,000 SF Ground Floor  
10,000 SF Lower Level  
10,000 SF Basement

- Ceiling Heights: Retail 18 ft & Lower Level 12 ft
- Rent: Upon Request
- 35' of frontage on Broadway
- Internal Elevator
- Central HVAC System
- Beautiful, Cast Iron, Corinthian Columns
- Oversized Windows & Hardwood Floors

## NEIGHBORS

- Bloomingdale's
- Lululemon
- Michael Kors
- ZARA
- Nike, Inc.
- Tumi
- MAC
- PacSun
- Brandy Melville
- AllSaints
- Lady Foot Locker
- Aritzia

## RENT REDUCTION

**Paul Popkin**

Senior Managing Director

ppopkin@lee-associates.com

D 212.776.1213 M 201.819.0796

**LEE &  
ASSOCIATES**

COMMERCIAL REAL ESTATE SERVICES

# 515 BROADWAY - BETWEEN BROOME & SPRING STREETS



Paul Popkin

Senior Managing Director

ppopkin@lee-associates.com

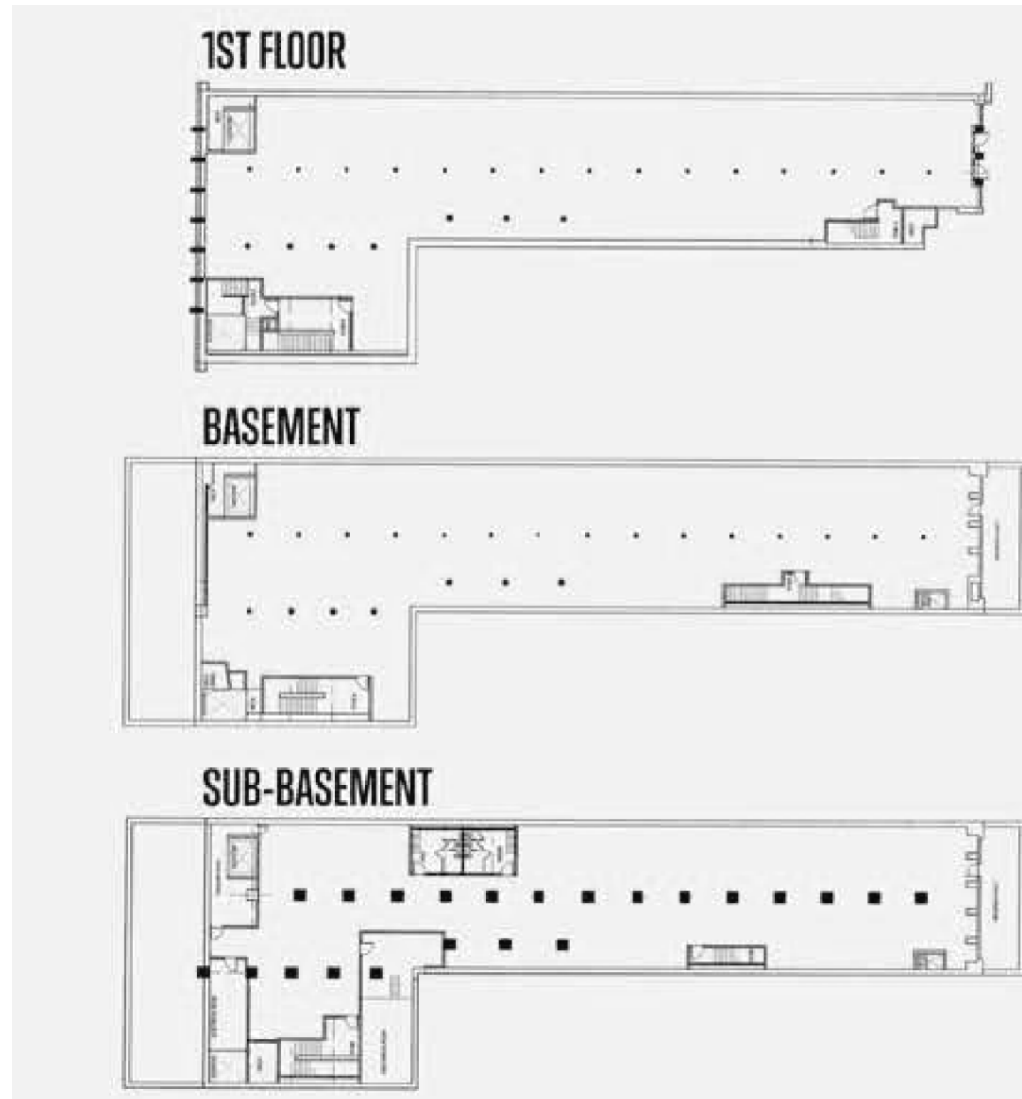
D 212.776.1213 M 201.819.0796

 **LEE &  
ASSOCIATES**  
COMMERCIAL REAL ESTATE SERVICES



# 515 BROADWAY - BETWEEN BROOME & SPRING STREETS

## FLOOR PLANS



**Paul Popkin**

Senior Managing Director

ppopkin@lee-associates.com

D 212.776.1213 M 201.819.0796

**LEE &  
ASSOCIATES**  
COMMERCIAL REAL ESTATE SERVICES