

As exclusive agent for the Owner, we are pleased to announce the following prime space for lease:

131 ESSEX STREET

NEW TO THE MARKET!



DENNIS SOMECK
Exec. Managing Director
| Principal
212.776.1270
dsomeck@lee-associates.com

JUSTIN MYERS
Exec. Managing Director
| Principal
212.776.1281
jmyers@lee-associates.com

CONOR KRUP
Managing Director
212.776.4345
ckrup@lee-associates.com

RACHEL KIRKHAM
Associate Broker
919.605.6797
rkirkham@lee-associates.com



131 ESSEX STREET

NWC OF RIVINGTON

Entire 2nd, 3rd, 5th & 6th Floors | 2,089 RSF each

4th Floor - LEASED

RENT: Upon Request

POSSESSION: Immediate

DETAILS

Recent full building renovation:
new lobby, elevator, & windows

Abundance of natural light

Windows on two sides

Wet pantry

ADA bathrooms on every floor

Tenant controlled HVAC
(including heat) 24/7

Air filtration ionizers (kills bacteria particles in air
and is effective against COVID-19)

Natural wood floors

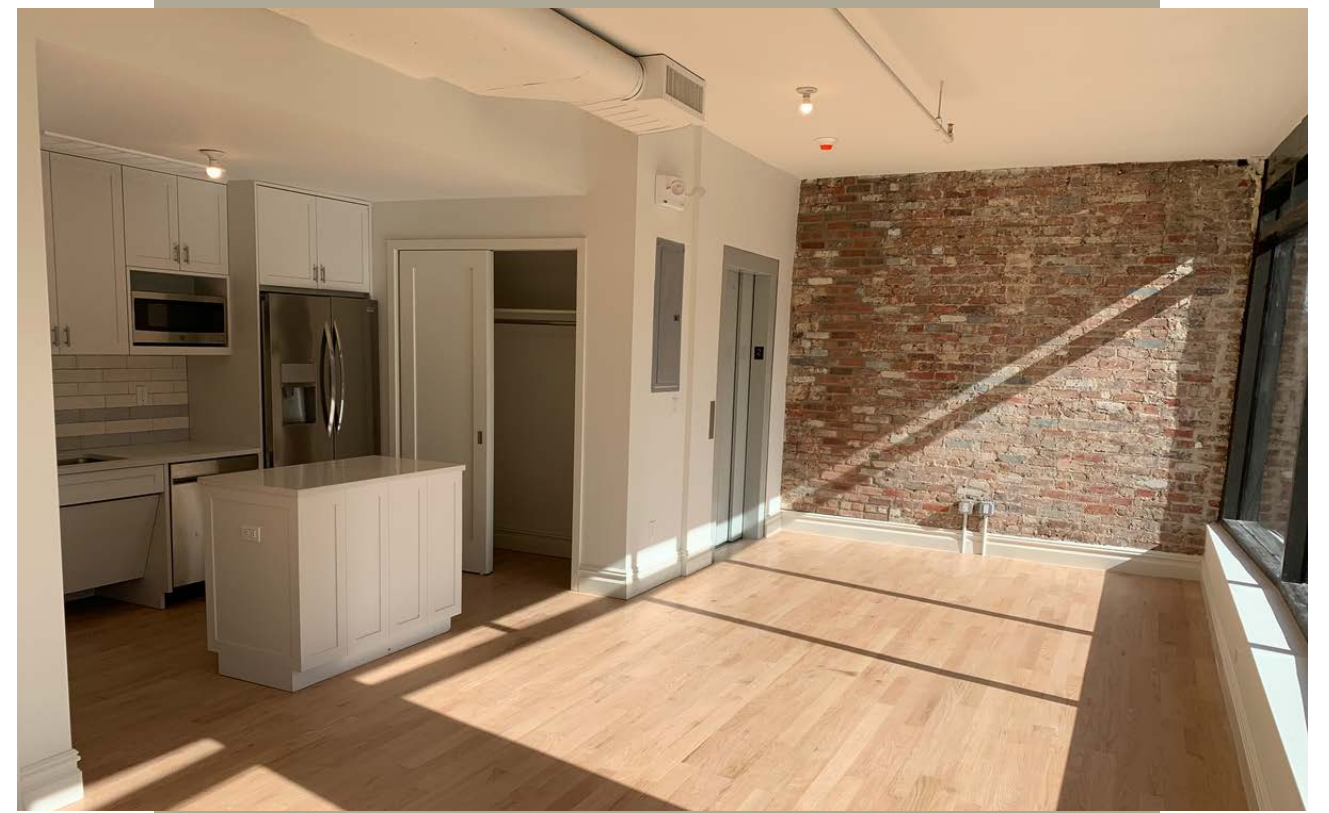
24/7/365 access

Direct electric

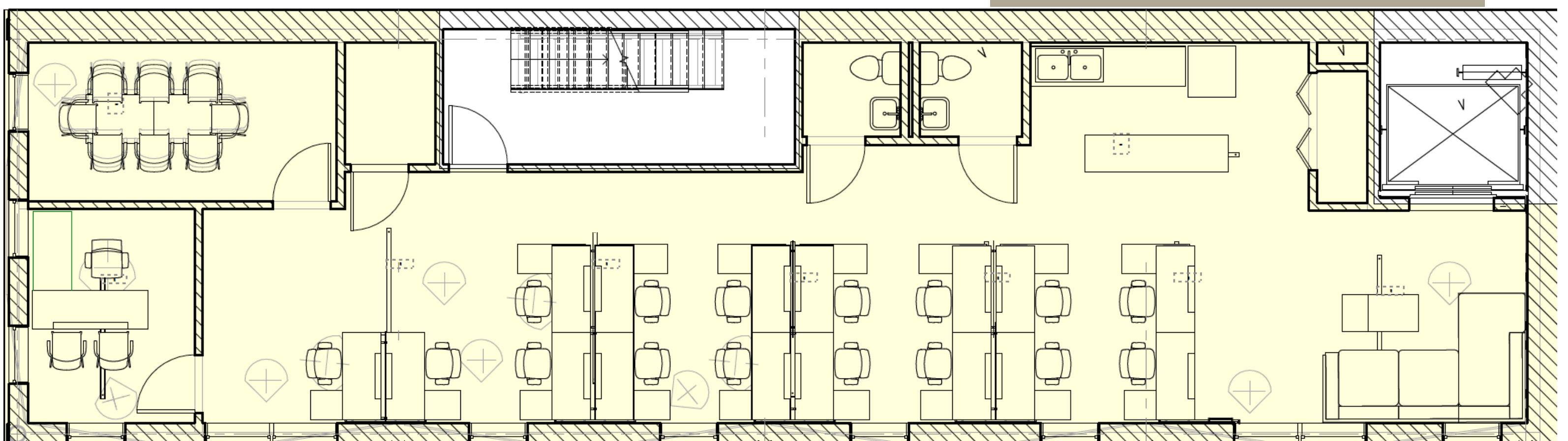
Flexible lease term (3-10 years)

Prewired CAT 6 cabling

Ideal medical or dental use



Typical Floor Plan



131 ESSEX STREET

NWC OF RIVINGTON



[4TH FLOOR
VIRTUAL TOUR](#)

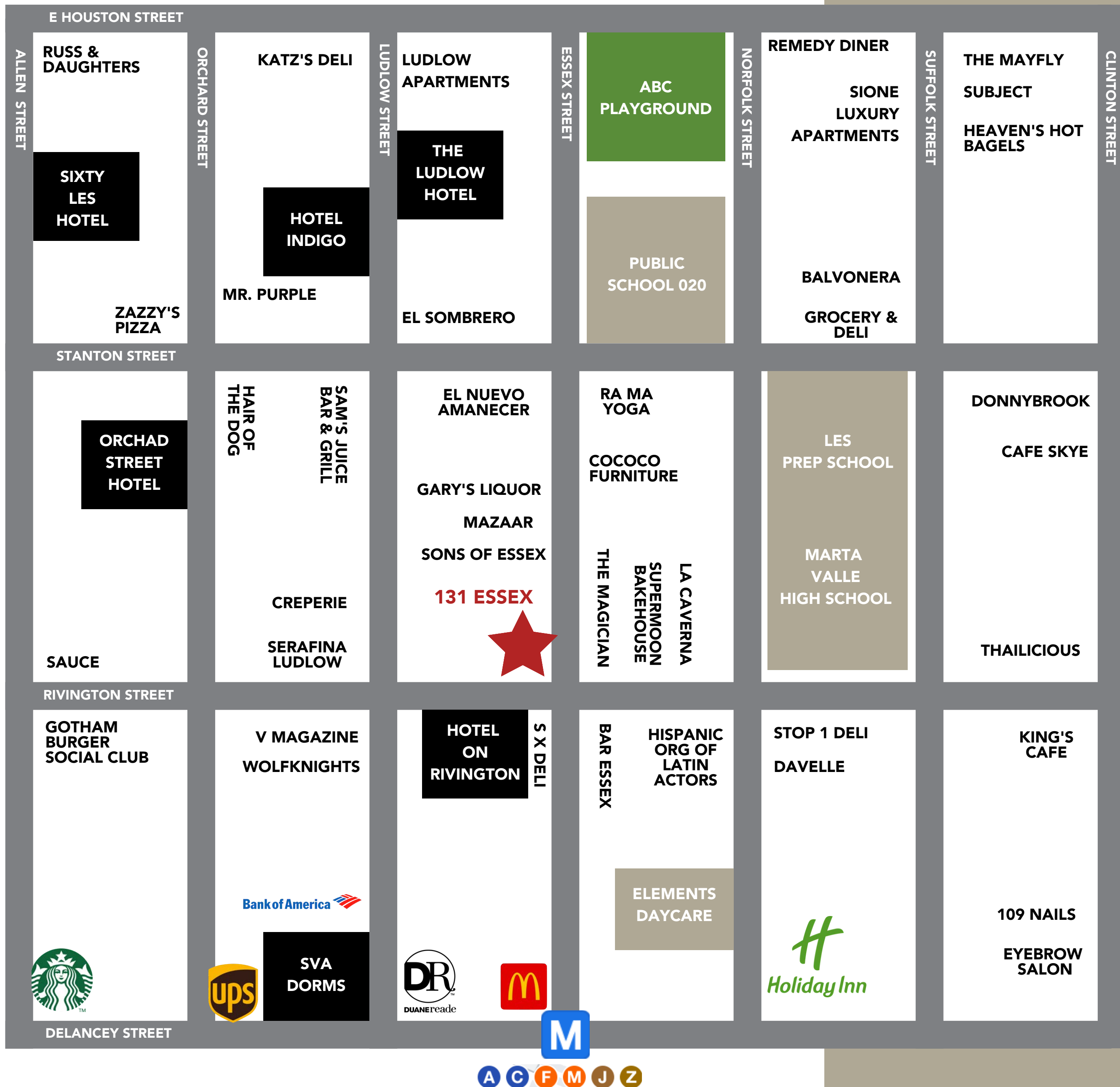


[5TH FLOOR
VIRTUAL TOUR](#)



131 ESSEX STREET

NWC OF RIVINGTON



FOR MORE INFORMATION, PLEASE CONTACT:

DENNIS SOMECK
Exec. Managing Director
| Principal
212.776.1270
dsomeck@lee-associates.com

JUSTIN MYERS
Exec. Managing Director
| Principal
212.776.1281
jmyers@lee-associates.com

CONOR KRUP
Managing Director
212.776.4345
ckrup@lee-associates.com

RACHEL KIRKHAM
Associate Broker
919.605.6797
rkirkham@lee-associates.com



All information supplied is from sources deemed reliable and is furnished subject to errors, omissions, modifications, removal of the listing from sale or lease, and to any listing conditions, including the rates and manner of payment of commissions for particular offerings imposed by principals or agreed by this Company, the terms of which are available to principals or duly licensed brokers. Any square footage dimensions set forth are approximate.