



**Gotham**  
LONG  
ISLAND  
CITY  
**point**

**56-03 CENTER BOULEVARD**  
HUNTER'S POINT SOUTH | LONG ISLAND CITY



# BRAND NEW RETAIL SPACE

located at the base of a  
1,132-unit residential  
development in  
Long Island City

## Ground Floor Retail

8,857 SF (divisible)  
Sidewalk Cafe Available

## Ceiling heights

Up to 21 Feet

## Possession

Q4 2022

## Asking Rent

Upon Request



- Elevated waterfront location
- Stunning Manhattan Skyline views
- One block to Manhattan Ferry
- Directly across from Hunter's Point Park Overlook

RETAIL DIVISION  
SPACE ONE

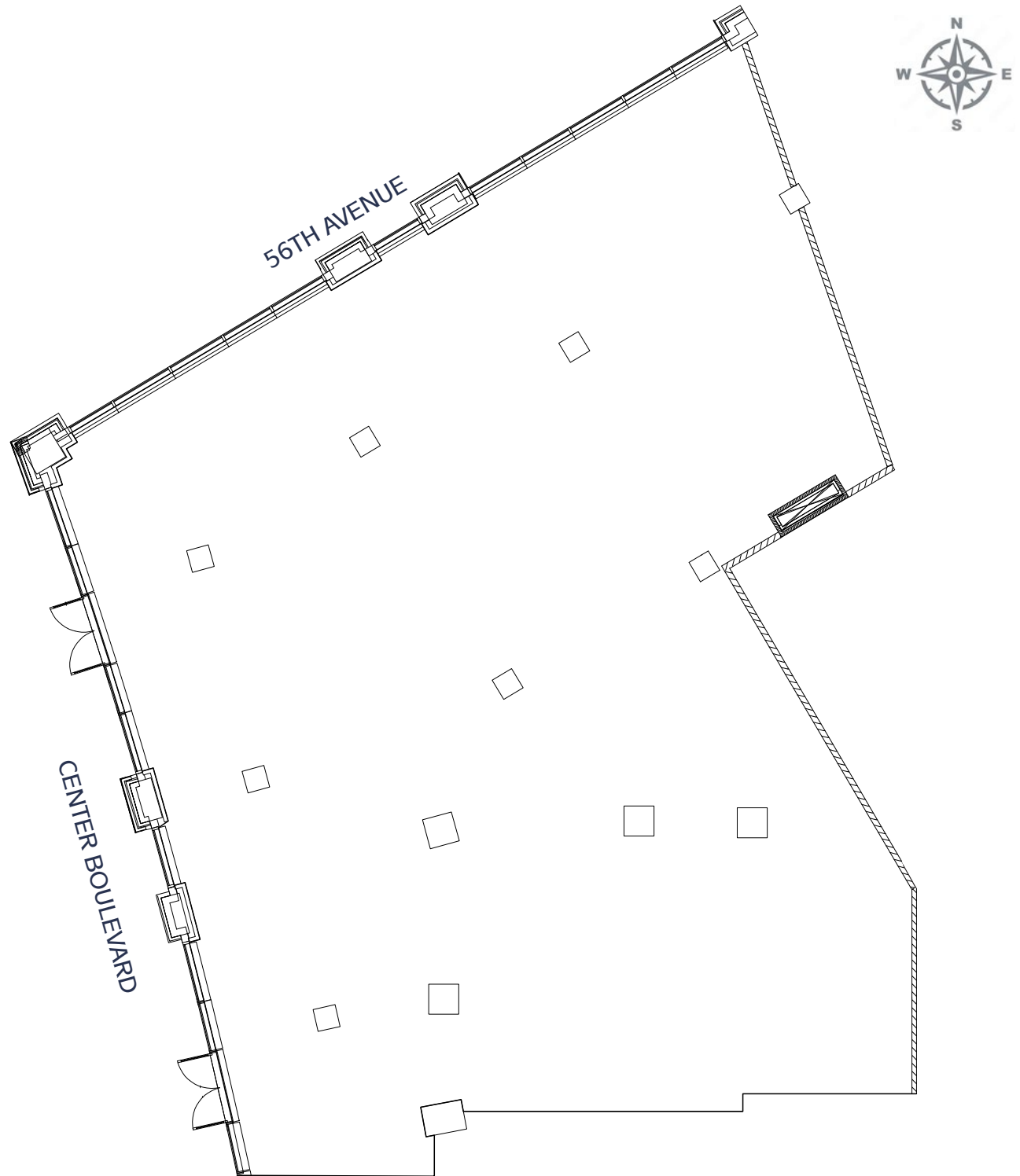
5,100 sf

FRONTAGE

141 feet

CEILING  
HEIGHTS

21 feet





RETAIL DIVISION  
SPACE TWO

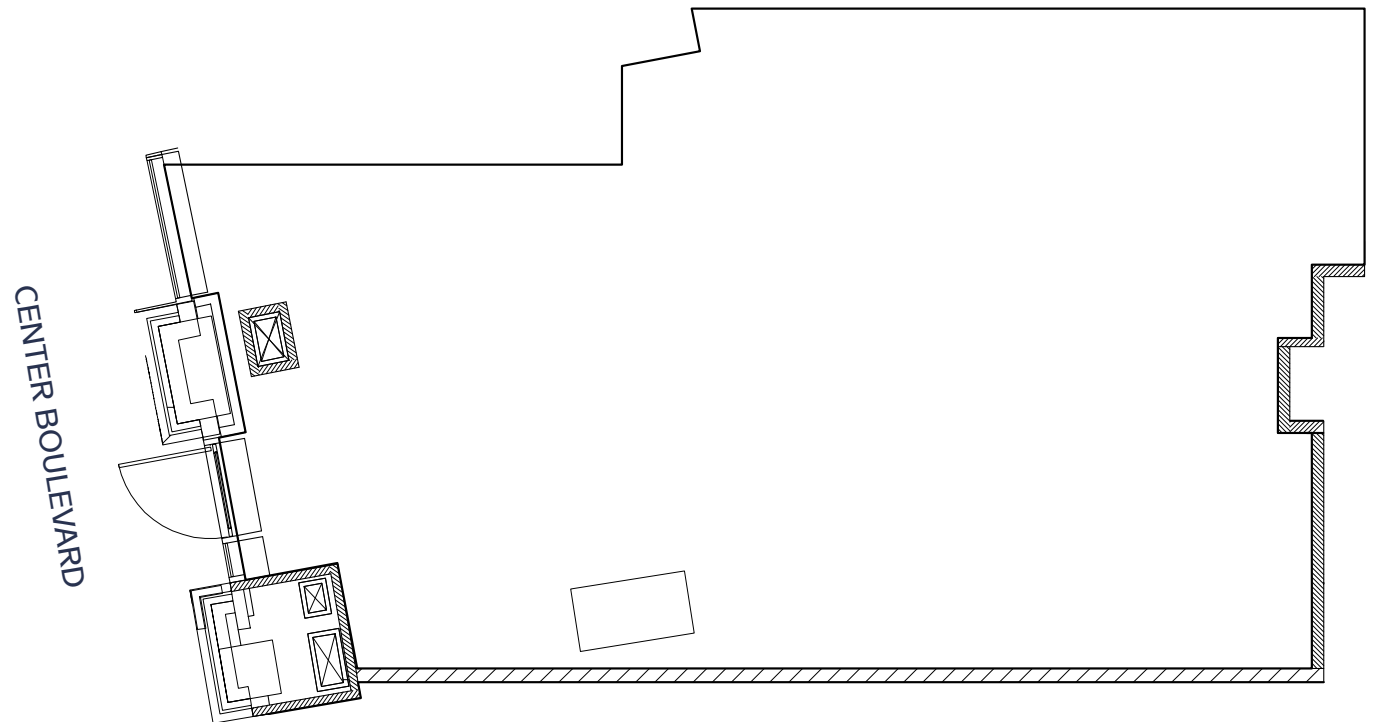
890 sf

FRONTAGE

20 feet

CEILING  
HEIGHTS

17 feet



RETAIL DIVISION  
SPACE THREE

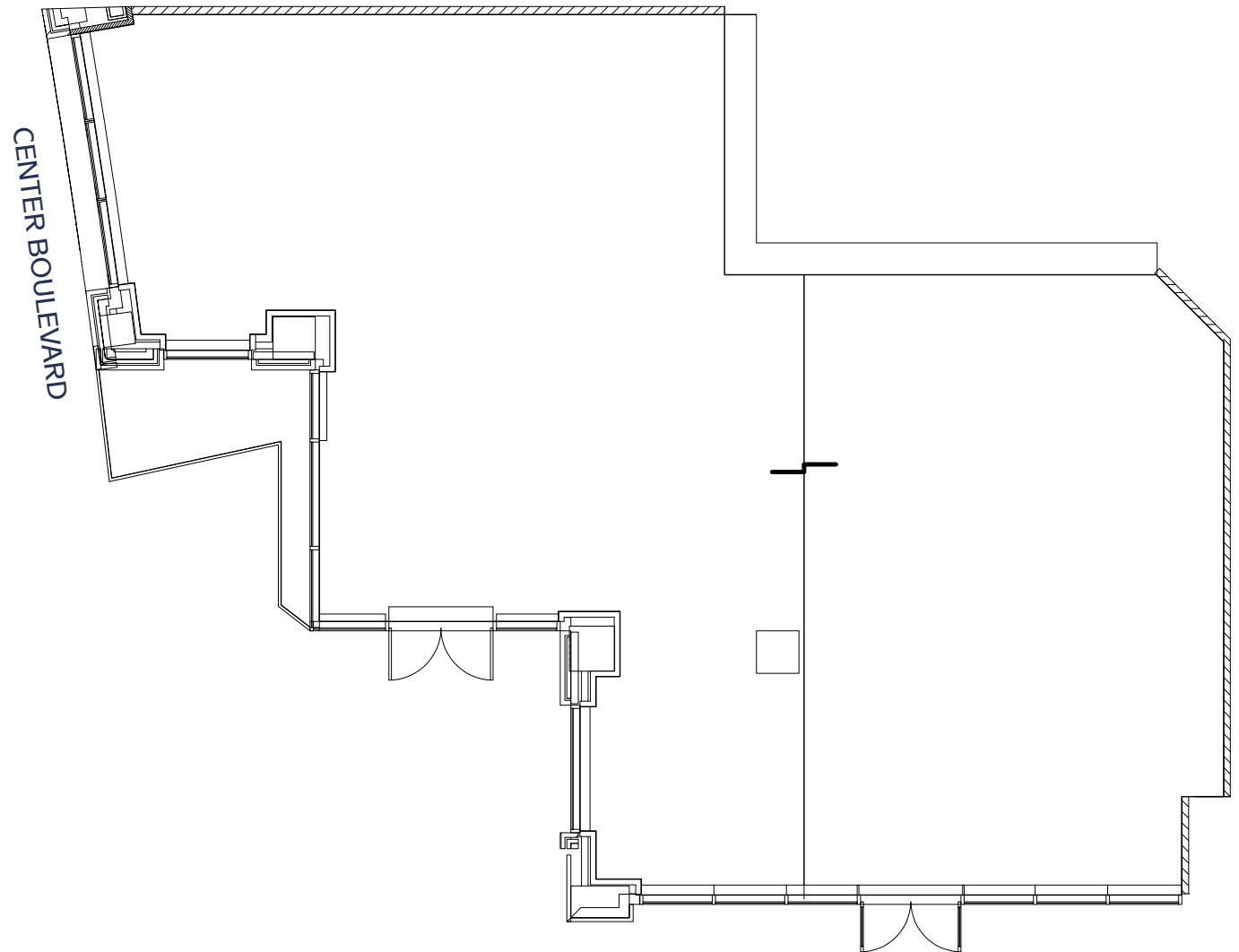
2,560 sf

FRONTAGE

100 feet

CEILING  
HEIGHTS

14 feet



57TH AVENUE

# POINTS OF INTEREST

1	American Brass
2	Piatto
3	American Brass
4	Pooches LIC
5	Chinelos Birria Taco
6	Santa Chiara Caffè
7	sLiCe LIC Pizzeria
8	CVS
9	Luminescence
10	Queens Public Library at Hunter's Point
11	Skinny's Cantina
12	Walgreens Pharmacy
13	Fifth Hammer Brewing
14	SHI
15	Urban Market
16	Black Star Bakery
17	Rainbow Childhood Development Center
18	Bricktown Bagels & Café
19	Tournesol
20	Black Star Bakery & Kitchen
21	Dunkin'
22	Casa Enrique
23	Bareburger
24	T-Mobile
25	Café Henri
26	Sweet Chick
27	Blend LIC
28	The Baroness





FOR MORE INFORMATION  
**BRAD SCHWARZ**  
Executive Managing Director | Principal  
212.776.1290  
[bschwarz@lee-associates.com](mailto:bschwarz@lee-associates.com)

**CORY GAHR**  
Managing Director  
212.776.1271  
[cgahr@lee-associates.com](mailto:cgahr@lee-associates.com)

**GOTHAM**  
DEVELOPER OWNER MANAGER

**LEE &  
ASSOCIATES**  
COMMERCIAL REAL ESTATE SERVICES

All information supplied is from sources deemed reliable and is furnished subject to errors, omissions, modifications, removal of the listing from sale or lease, and to any listing conditions, including the rates and manner of payment of commissions for particular offerings imposed by principals or agreed by this Company, the terms of which are available to principals or duly licensed brokers. Any square footage dimensions set forth are approximate.