

235 WEST 14TH STREET

BETWEEN SEVENTH & EIGHTH AVENUES



SPACE INFORMATION

Lower Level **900 sf**

Backyard **1,000 sf**

Ceiling **8 feet**

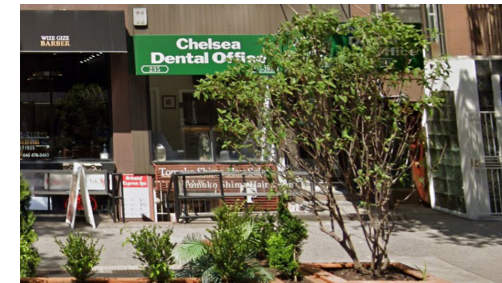
Possession – March 2022

Rent – Upon Request

All Uses Considered

Comments

- Steps from **1 2 3 A C E**
- Excellent foot traffic
- Rear Yard Use Available
- Below Grade Space



FOR MORE INFORMATION, PLEASE CONTACT:

BRAD SCHWARZ

Executive Managing Director and Principal
212.776.1290
bschwarz@lee-associates.com

JAMES FICELMAN

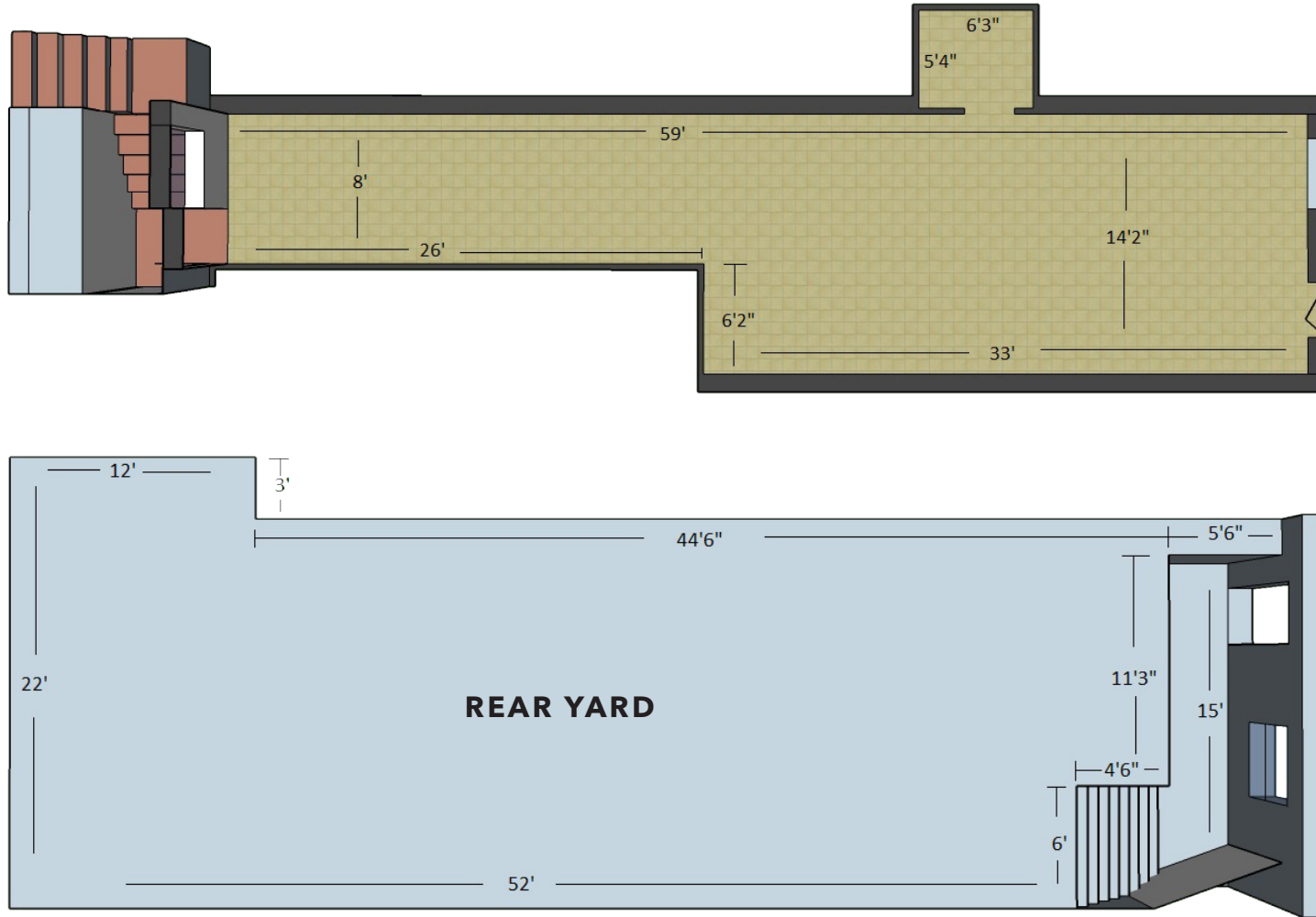
Director
212.776.1288
jficelman@lee-associates.com

All information supplied is from sources deemed reliable and is furnished subject to errors, omissions, modifications, removal of the listing for sale or lease, and to any listing conditions, including the rates and manner of payment of commissions for particular offerings imposed by principals or agreed by this Company, the terms of which are available to principals or duly licensed brokers. Any square footage dimensions set forth are approximate.

235 WEST 14TH STREET

BETWEEN SEVENTH & EIGHTH AVENUES

WEST 14TH STREET



FOR MORE INFORMATION, PLEASE CONTACT:

BRAD SCHWARZ

Executive Managing Director and Principal
212.776.1290
bschwarz@lee-associates.com

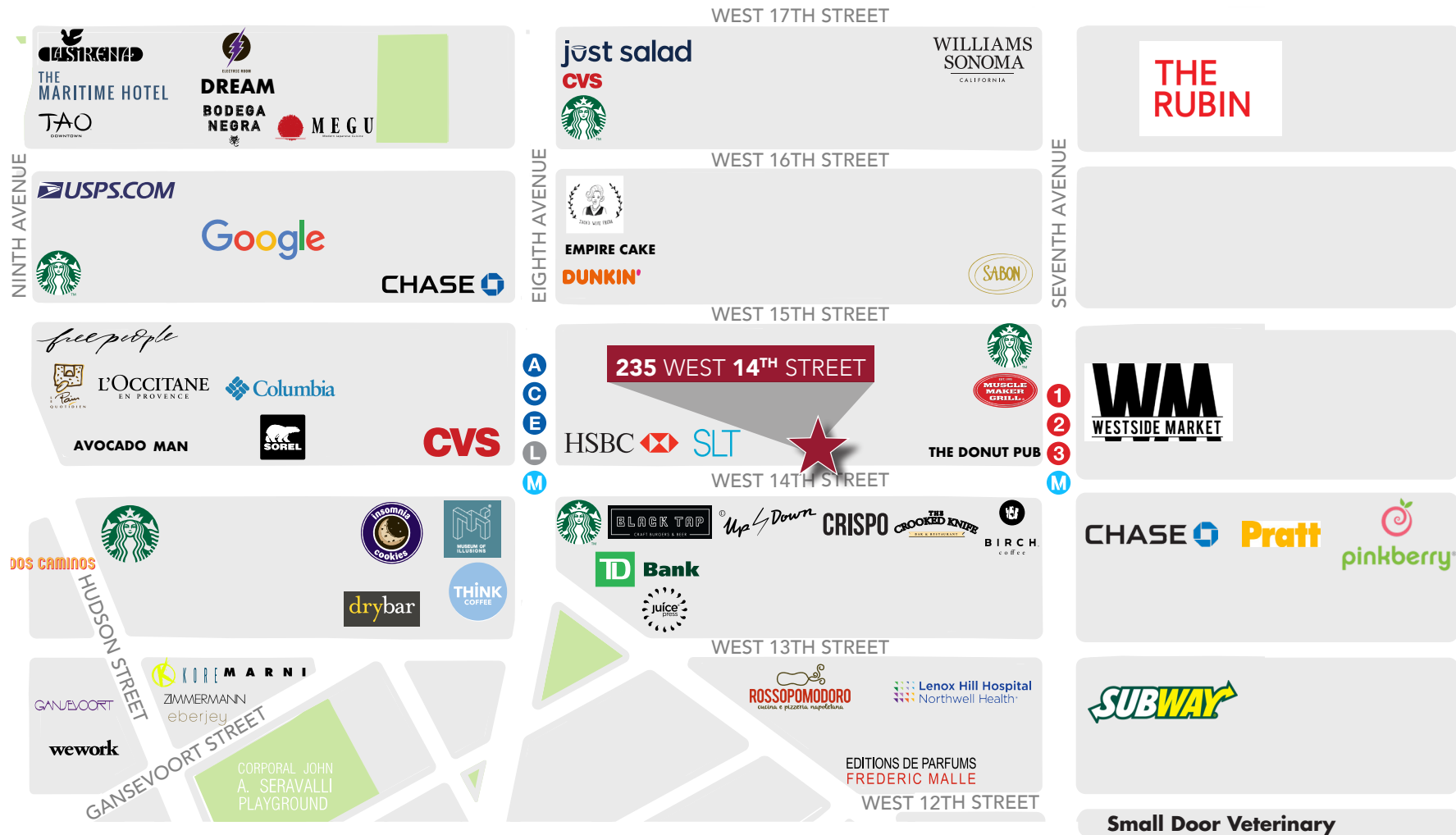
JAMES FICELMAN

Director
212.776.1288
jficelman@lee-associates.com

All information supplied is from sources deemed reliable and is furnished subject to errors, omissions, modifications, removal of the listing for sale or lease, and to any listing conditions, including the rates and manner of payment of commissions for particular offerings imposed by principals or agreed by this Company, the terms of which are available to principals or duly licensed brokers. Any square footage dimensions set forth are approximate.

235 WEST 14TH STREET

BETWEEN SEVENTH & EIGHTH AVENUES



FOR MORE INFORMATION, PLEASE CONTACT:

BRAD SCHWARZ

Executive Managing Director and Principal
212.776.1290
bschwarz@lee-associates.com

JAMES FICELMAN

Director
212.776.1288
jficelman@lee-associates.com

All information supplied is from sources deemed reliable and is furnished subject to errors, omissions, modifications, removal of the listing for sale or lease, and to any listing conditions, including the rates and manner of payment of commissions for particular offerings imposed by principals or agreed by this Company, the terms of which are available to principals or duly licensed brokers. Any square footage dimensions set forth are approximate.