

266 W/135 STREET



BETWEEN FREDERICK DOUGLAS & ADAM CLAYTON POWELL BOULEVARDS



FOR MORE INFORMATION, PLEASE CONTACT:

KENNETH SALZMAN, SIOR

212.776.1227

ksalzman@lee-associates.com

SETH ROSEN

212.776.1278

srosen@lee-associates.com

CORY GAHR

212.776.1271

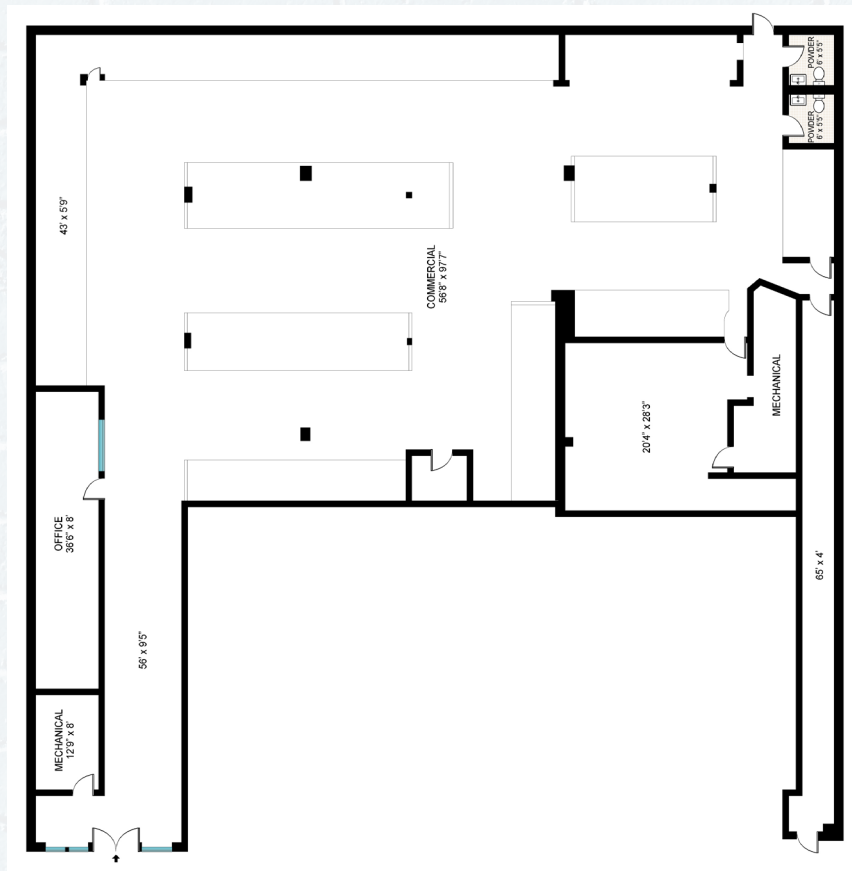
cgahr@lee-associates.com



266 W 135 STREET

BETWEEN FREDERICK DOUGLAS & ADAM CLAYTON POWELL BOULEVARDS

RETAIL 1



135TH STREET

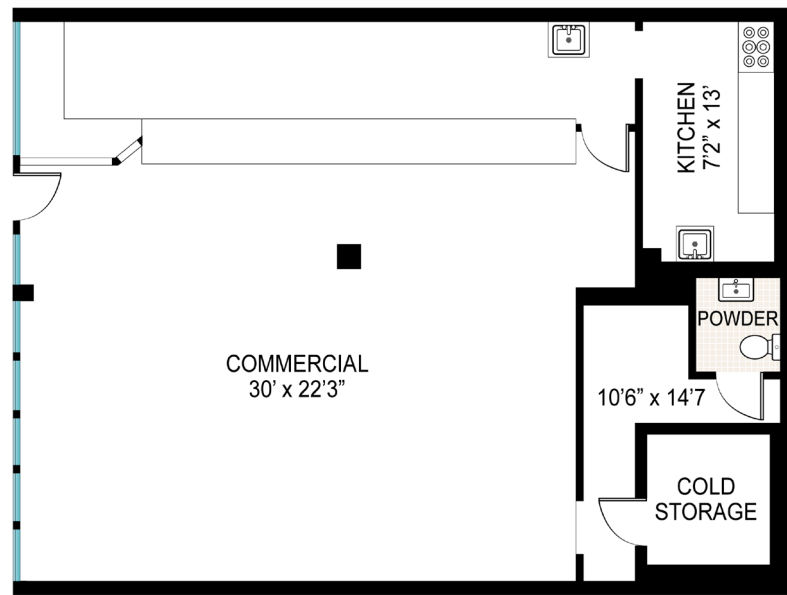
HIGHLIGHTS

- Approximately 10,000 SF of available retail (logical divisions considered)
- Former laundromat, 6,500 SF, with existing water and power infrastructure
- Former restaurants and bodega, 3,500 SF
- Up to 100 feet of frontage along 135th Street
- Ceiling Heights: 17'
- Available August 1, 2022
- Incredible signage and branding opportunity
- Ground lease redevelopment opportunity, R7-2/ C1-4 zoning, up to 65,000 SF Community Facility

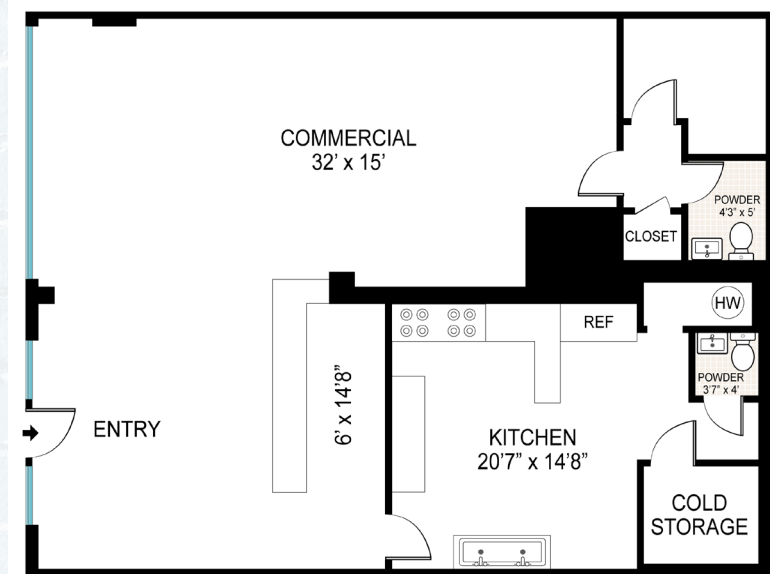
266 W 135 STREET

BETWEEN FREDERICK DOUGLAS & ADAM CLAYTON POWELL BOULEVARDS

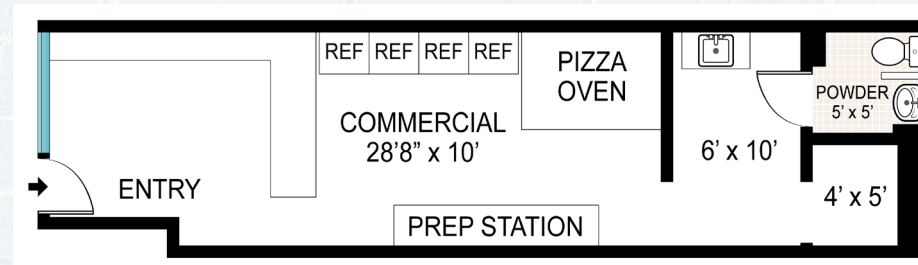
RETAIL 2



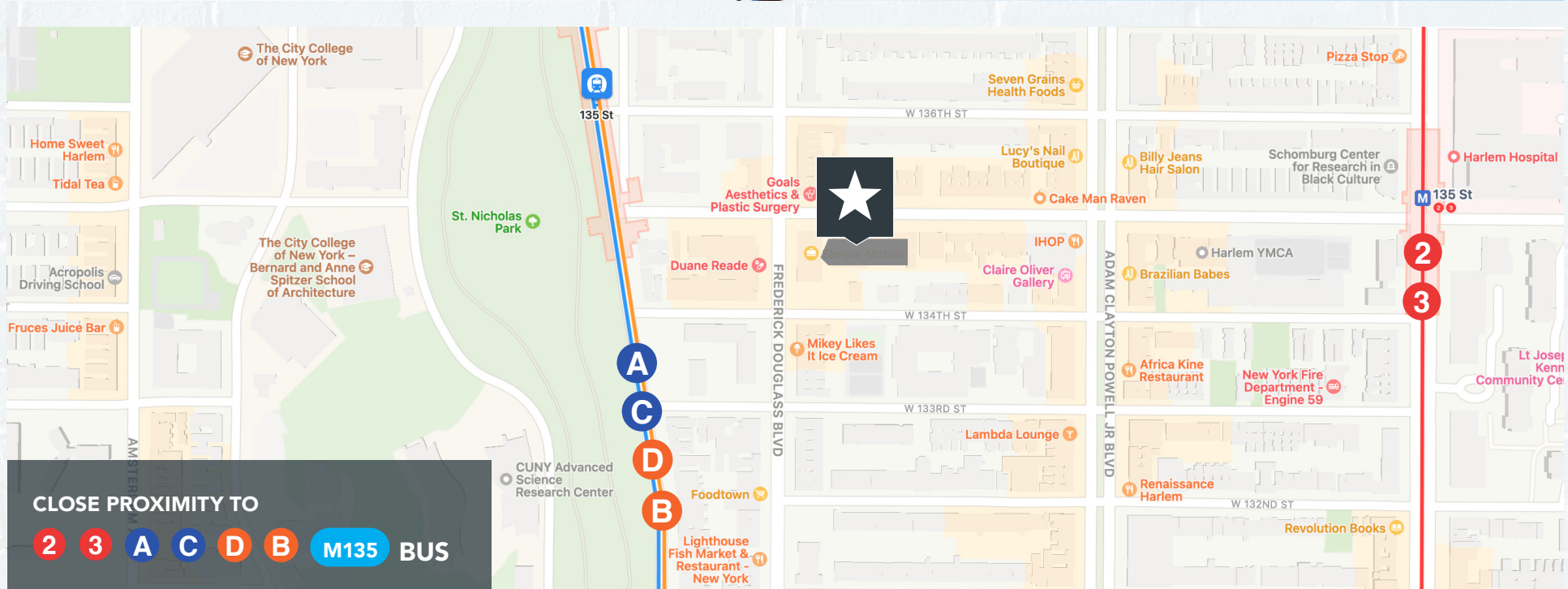
RETAIL 3



RETAIL 4



266 W 135 STREET



FOR MORE INFORMATION, PLEASE CONTACT:

KENNETH SALZMAN, SIOR

212.776.1227

ksalzman@lee-associates.com

SETH ROSEN

212.776.1278

srosen@lee-associates.com

CORY GAHR

212.776.1271

cgahr@lee-associates.com

