

As exclusive agents, we are pleased to announce the following prime space for sublease:

1201 BROADWAY



SPACE DETAILS

FLOOR Partial 10th Floor

SIZE 2,400 SF

AVAILABILITY February 1, 2023

TERM 1 -2 Years

RENT Upon request

Unmatched views

Hardwood floors

High ceilings

Open space with a mixture of offices & conference rooms

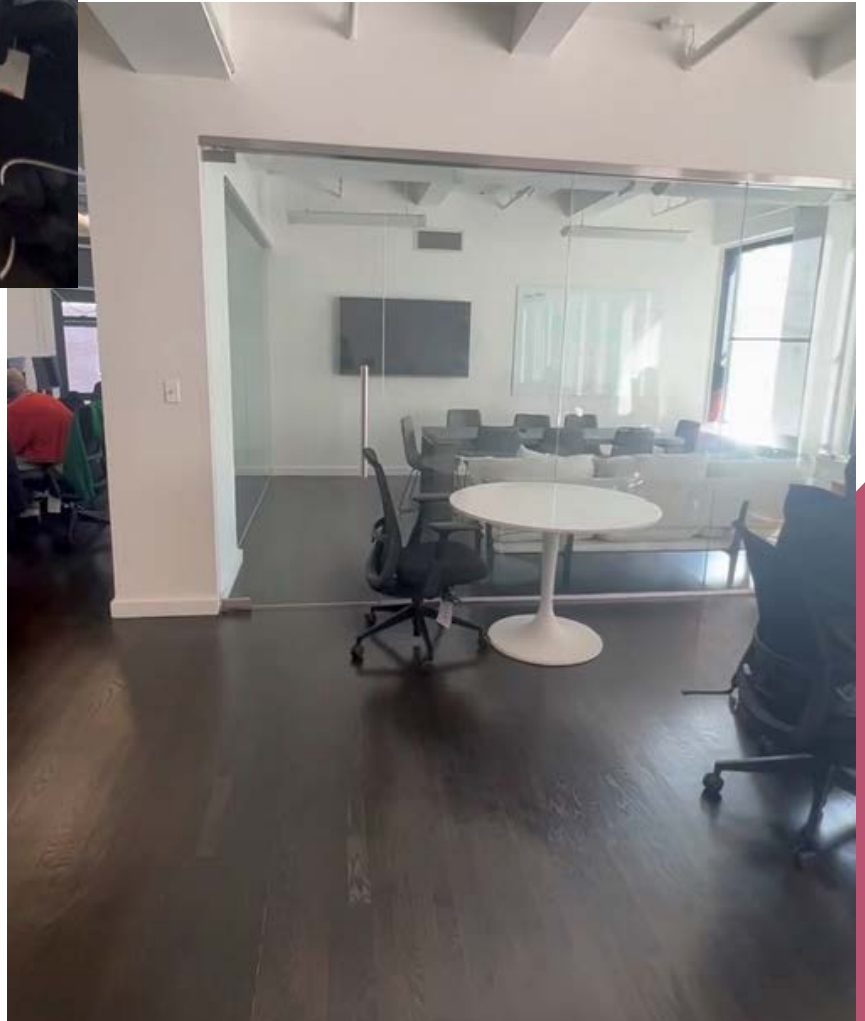
Seating for ~20

Two glass conference rooms

DENNIS SOMECK
Exec. Managing Director | Principal
212.776.1270
dsomeck@lee-associates.com

JUSTIN MYERS
Exec. Managing Director | Principal
212.776.1281
jmyers@lee-associates.com

RACHEL KIRKHAM
Associate
212.776.1279
rkirkham@lee-associates.com



For more information, please contact:

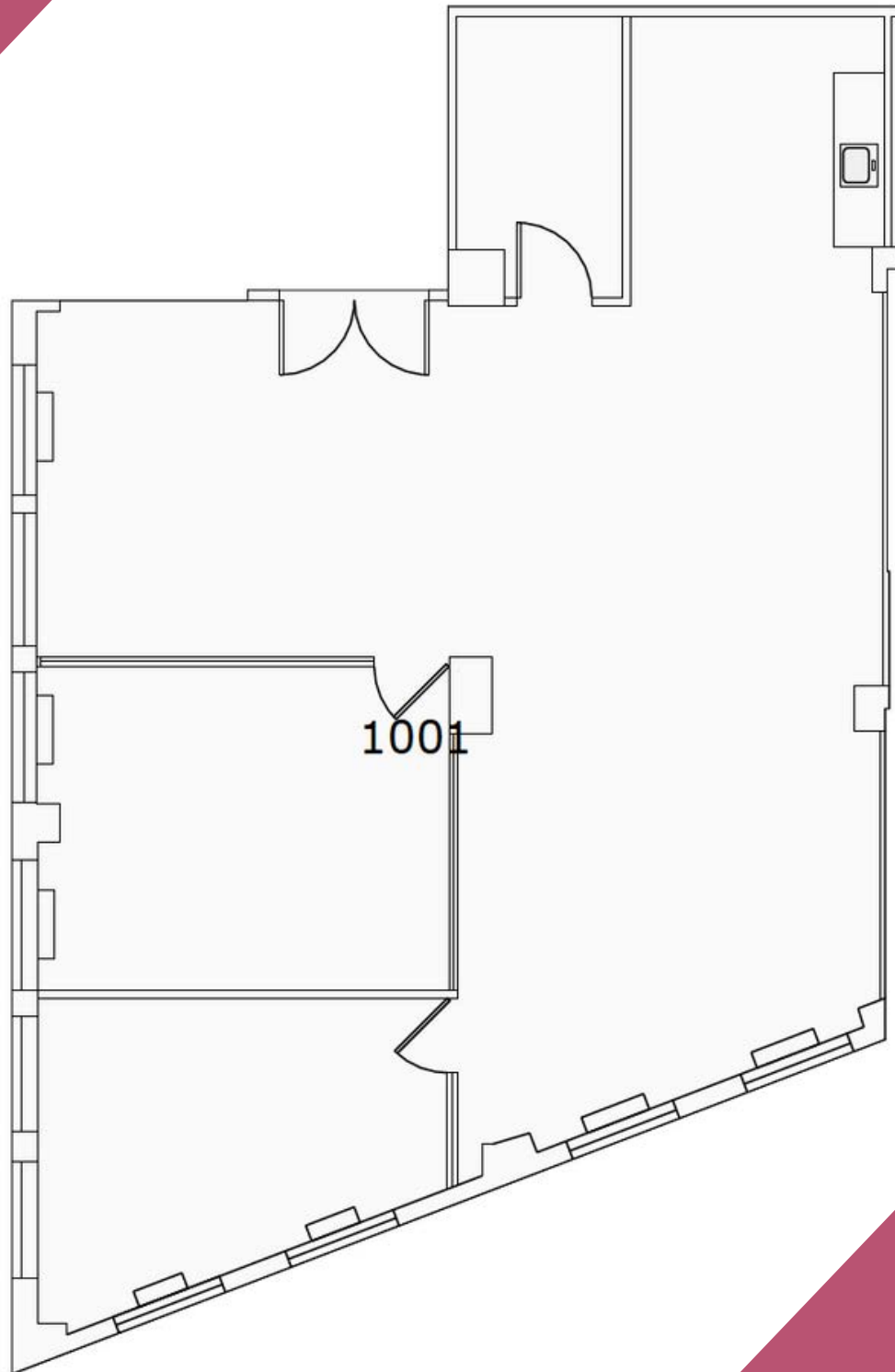
DENNIS SOMECK
Exec. Managing Director | Principal
212.776.1270
dsomeck@lee-associates.com

JUSTIN MYERS
Exec. Managing Director | Principal
212.776.1281
jmyers@lee-associates.com

RACHEL KIRKHAM
Associate
212.776.1279
rkirkham@lee-associates.com



All information supplied is from sources deemed reliable and is furnished subject to errors, omissions, modifications, removal of the listing from sale or lease, and to any listing conditions, including the rates and manner of payment of commissions for particular offerings imposed by principals or agreed by this Company, the terms of which are available to principals or duly licensed brokers. Any square footage dimensions set forth are approximate.



For more information, please contact:

DENNIS SOMECK
Exec. Managing Director | Principal
212.776.1270
dsomeck@lee-associates.com

JUSTIN MYERS
Exec. Managing Director | Principal
212.776.1281
jmyers@lee-associates.com

RACHEL KIRKHAM
Associate
212.776.1279
rkirkham@lee-associates.com

