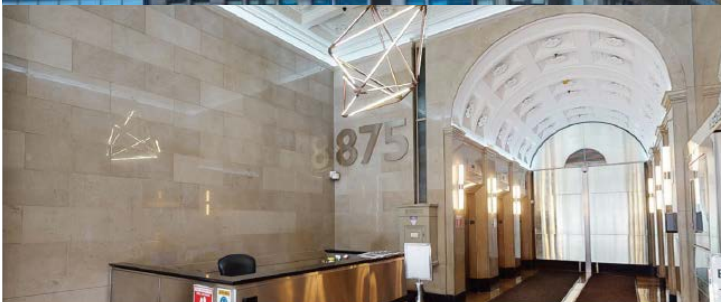


**FULL FLOOR
HEAVEN!**



AS EXCLUSIVE LEASING AGENTS, WE ARE PLEASED TO OFFER THE FOLLOWING PRIME SPACE FOR LEASE:

875 AVENUE OF THE AMERICAS

NORTHWEST CORNER OF 31ST STREET

NEW TO THE MARKET

ENTIRE 2ND FLOOR
11,604 SF

~~ENTIRE 21ST FLOOR~~
~~9,270 SF~~ **LEASED**

ENTIRE 9TH FLOOR
NEW BUILDING INSTALLATION
11,604 SF

ENTIRE 22ND FLOOR
FULL WRAP-AROUND TERRACE
7,083 SF

ENTIRE 20TH FLOOR
9,270 SF

~~ENTIRE 25TH FLOOR~~
~~6,189 SF~~ **LEASED**



GORGEOUS
FULL FLOORS



GREAT LIGHT
AND VIEWS



RECENT BUILDING
RENOVATION - NEW
WINDOWS, LOBBY,
AND ELEVATOR



ATTENDED
LOBBY 24/7



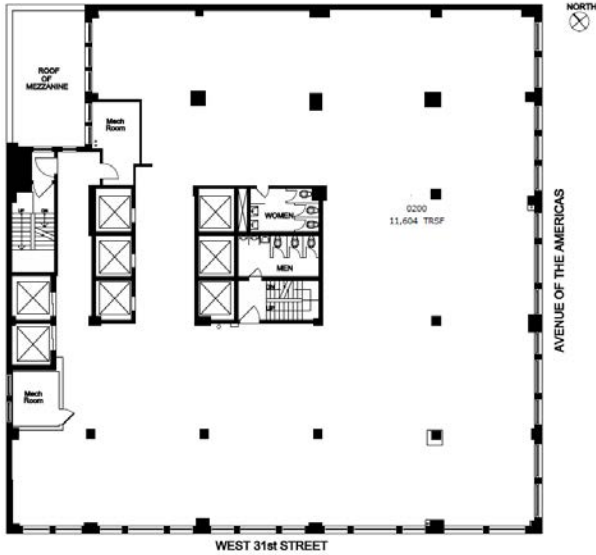
LONG-TIME
STABLE BUILDING
OWNERSHIP



CENTRAL LOCATION
CONVENIENT TO ALL
TRANSPORTATION

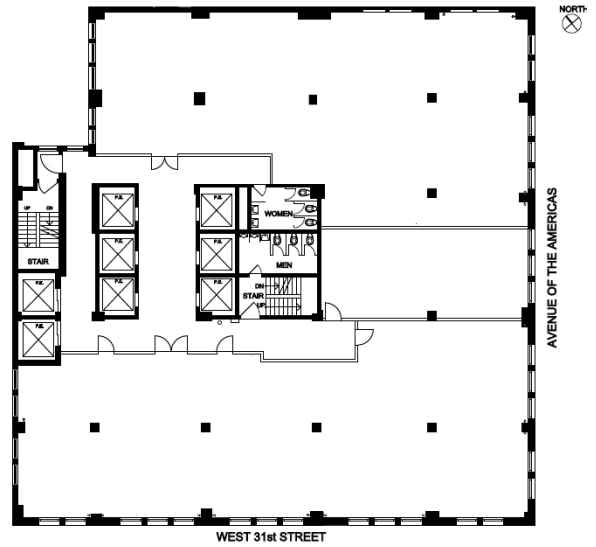
ENTIRE 2ND FLOOR

11,604 SF



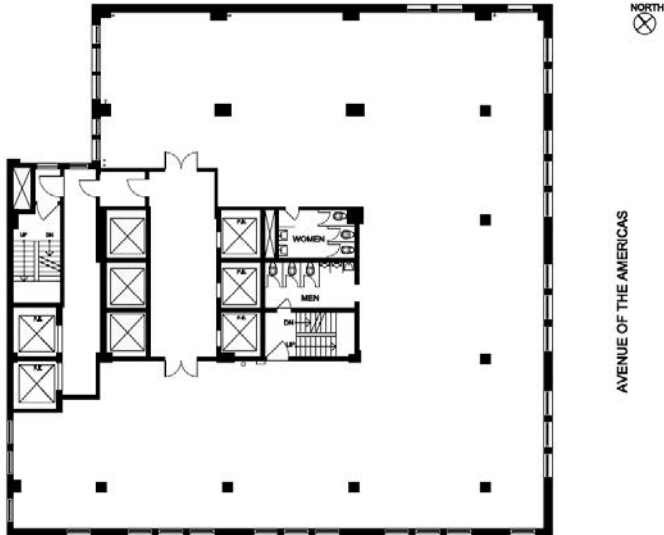
ENTIRE 9TH FLOOR

11,604 SF | New Building Installation



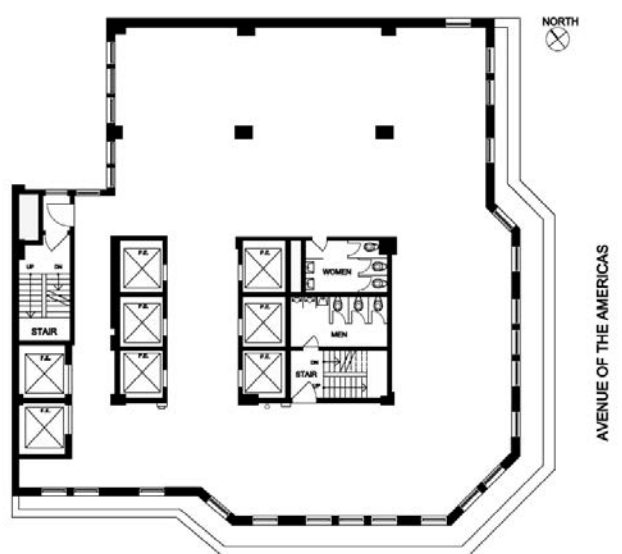
ENTIRE 20TH FLOOR

9,270 SF | New Building Installation Available



~~ENTIRE 25TH FLOOR~~

~~6,189 SF~~ | Available 10/1/21 **LEASED**



ENTIRE 22ND FLOOR

7,083 SF | Brand New Prebuilt



[CLICK FOR VIRTUAL TOUR](#)



ENTIRE 22ND FLOOR

7,083 SF | Brand New Prebuilt



Entire 22nd floor - 7,083 SF

Full wrap-around terrace

Immediate possession

Asking rent - upon request

5-10 year term



[CLICK FOR VIRTUAL TOUR](#)

875 AOFA

 LEE &
ASSOCIATES
COMMERCIAL REAL ESTATE SERVICES

PETER BRAUS
Managing Principal
212.776.1203
pbraus@lee-associates.com

DENNIS SOMECK
Exec. Managing Director & Principal
212.776.1270
dsomeck@lee-associates.com

JUSTIN MYERS
Exec. Managing Director & Principal
212.776.1281
jmyers@lee-associates.com

 LEE &
ASSOCIATES
COMMERCIAL REAL ESTATE SERVICES

All information supplied is from sources deemed reliable and is furnished subject to errors, omissions, modifications, removal of the listing from sale or lease, and to any listing conditions, including the rates and manner of payment of commissions for particular offerings imposed by principals or agreed by this Company, the terms of which are available to principals or duly licensed brokers. Any square footage dimensions set forth are approximate.