



THE BANKING HALL  
AT 108 LEONARD



THE BANKING HALL  
AT 108 LEONARD

## OVERVIEW

Contained within the elegant, landmarked condominium conversion 108 Leonard, The Banking Hall is an exceptional landmarked space located in the heart of New York City's trendy Tribeca neighborhood.

The multi-level Banking Hall offers an expansive floor plan suitable for an office, showroom, museum, gallery or similar usage.

The opulent space is approximately 17,000 square feet, and features soaring ceiling heights, rare architectural details and is accessible by a separate, private entrance.



PRIVATE ENTRANCE ON LAFAYETTE

BH

BANKING HALL

108 LEONARD



THE BANKING HALL  
AT 108 LEONARD

## BUILDING FEATURES

Private Entrance on Lafayette  
Large, Open and Flexible Floor Plans  
Multiple Levels  
Restoration to Original, Historical Elegance  
Marble Staircase  
2 Client Elevators and 1 Service Elevator  
Capacity: 350  
All Uses Considered  
Possession To Be Agreed Upon  
Nearby Subway Lines: 1, 6, N, Q, R, W, J and Z

### GROUND

Approx. 1,068 SF  
Approx. 12' to 29' Ceilings

### MAIN LEVEL

Approx. 10,339 SF  
Approx. 14' to 29' Ceilings

### MEZZANINE

Approx. 4,343 SF  
Approx. 9' to 14' Ceilings

### CELLAR

Approx. 1,267 SF  
Approx. 15' Ceiling

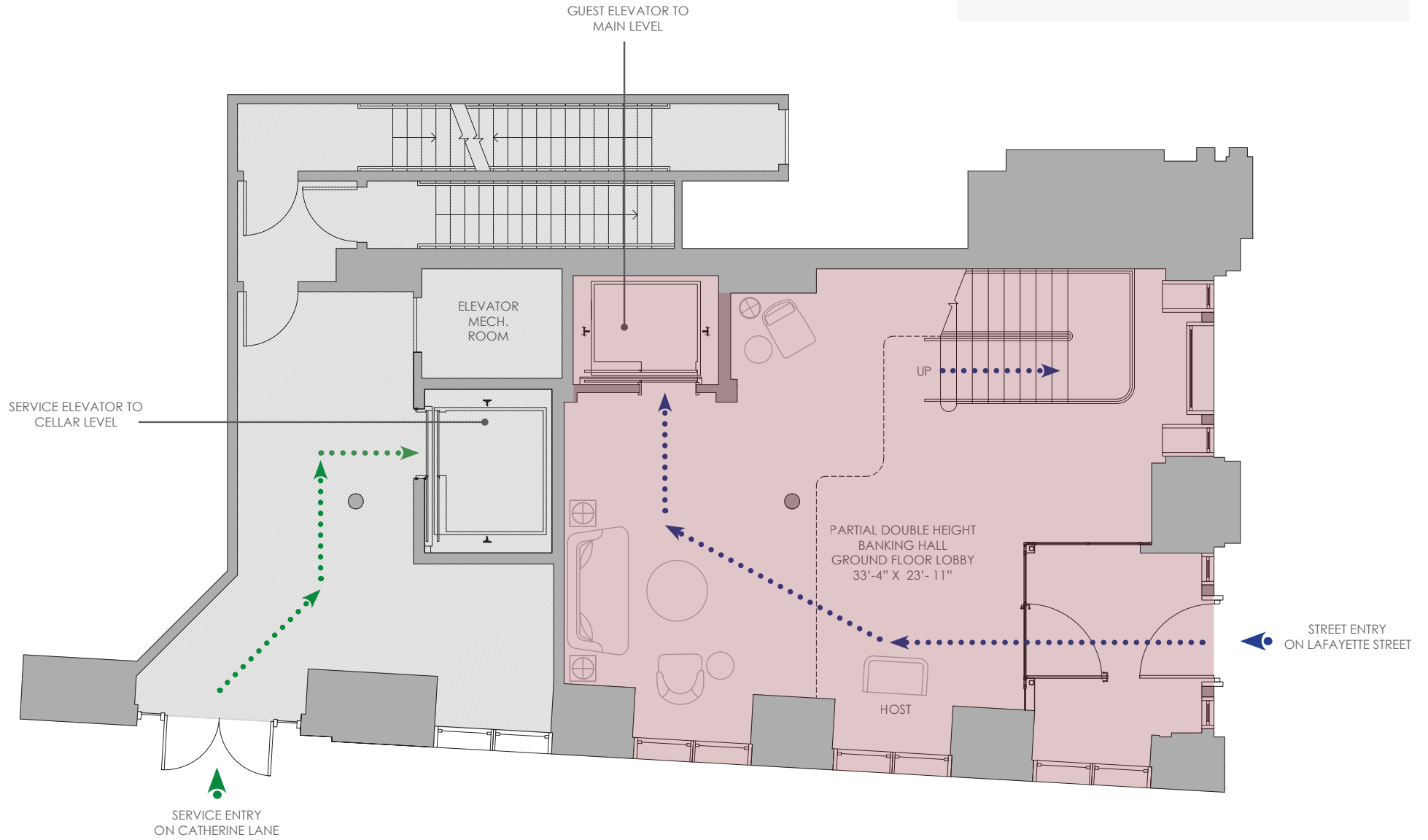
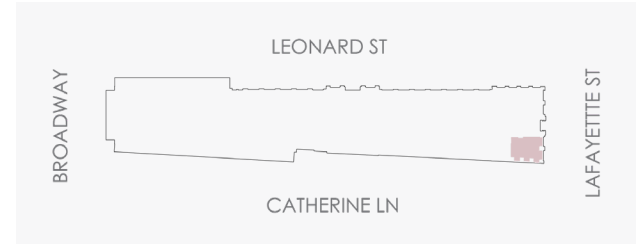






THE BANKING HALL  
AT 108 LEONARD

## GROUND LEVEL 1,068 Square Feet

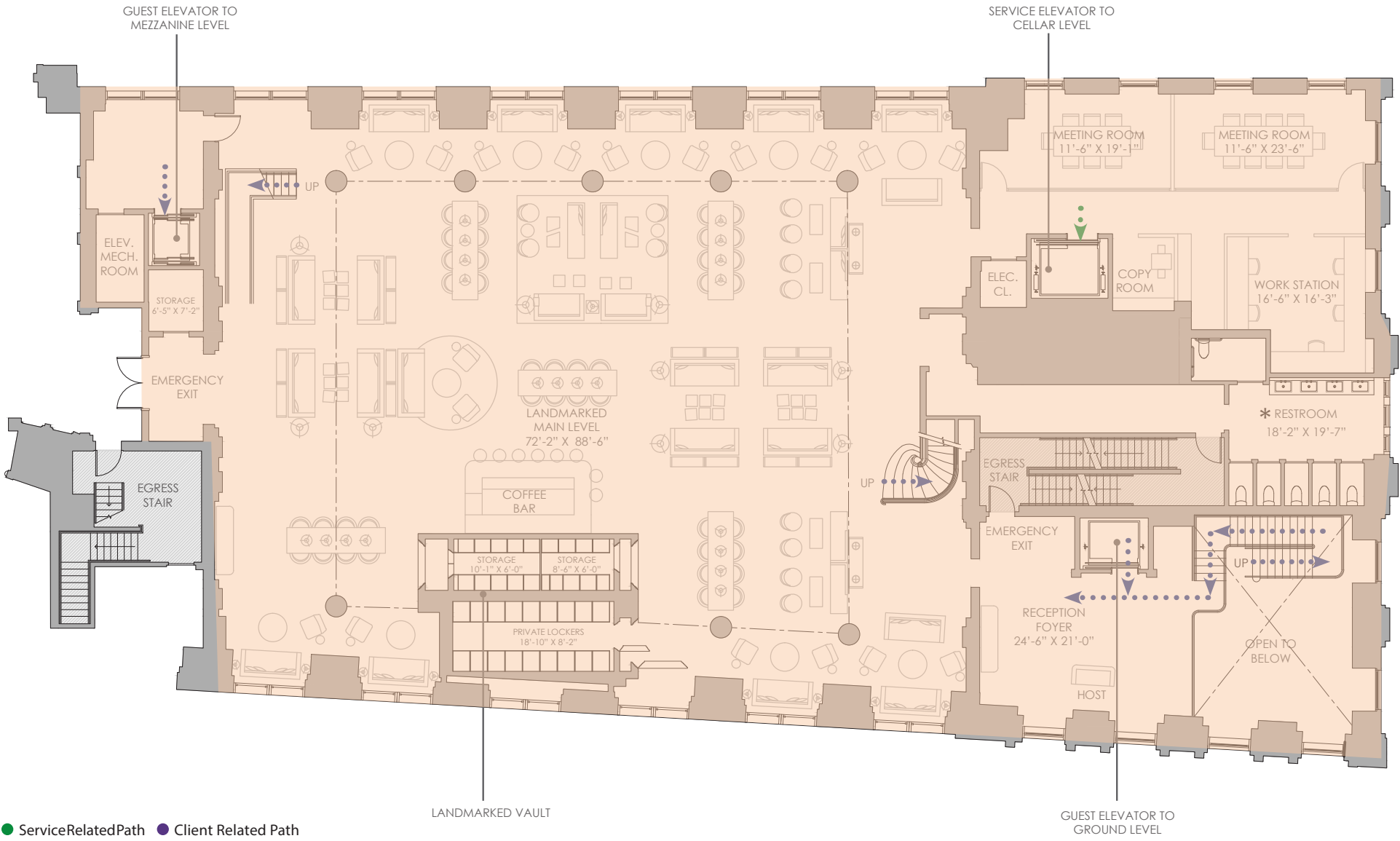
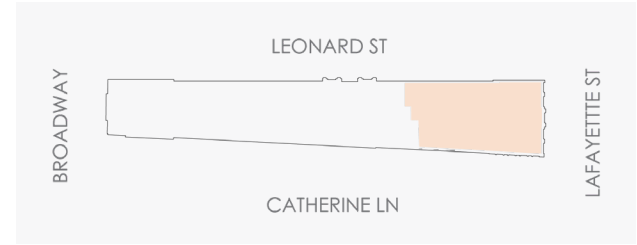


● ServiceRelatedPath ● Client Related Path



THE BANKING HALL  
AT 108 LEONARD

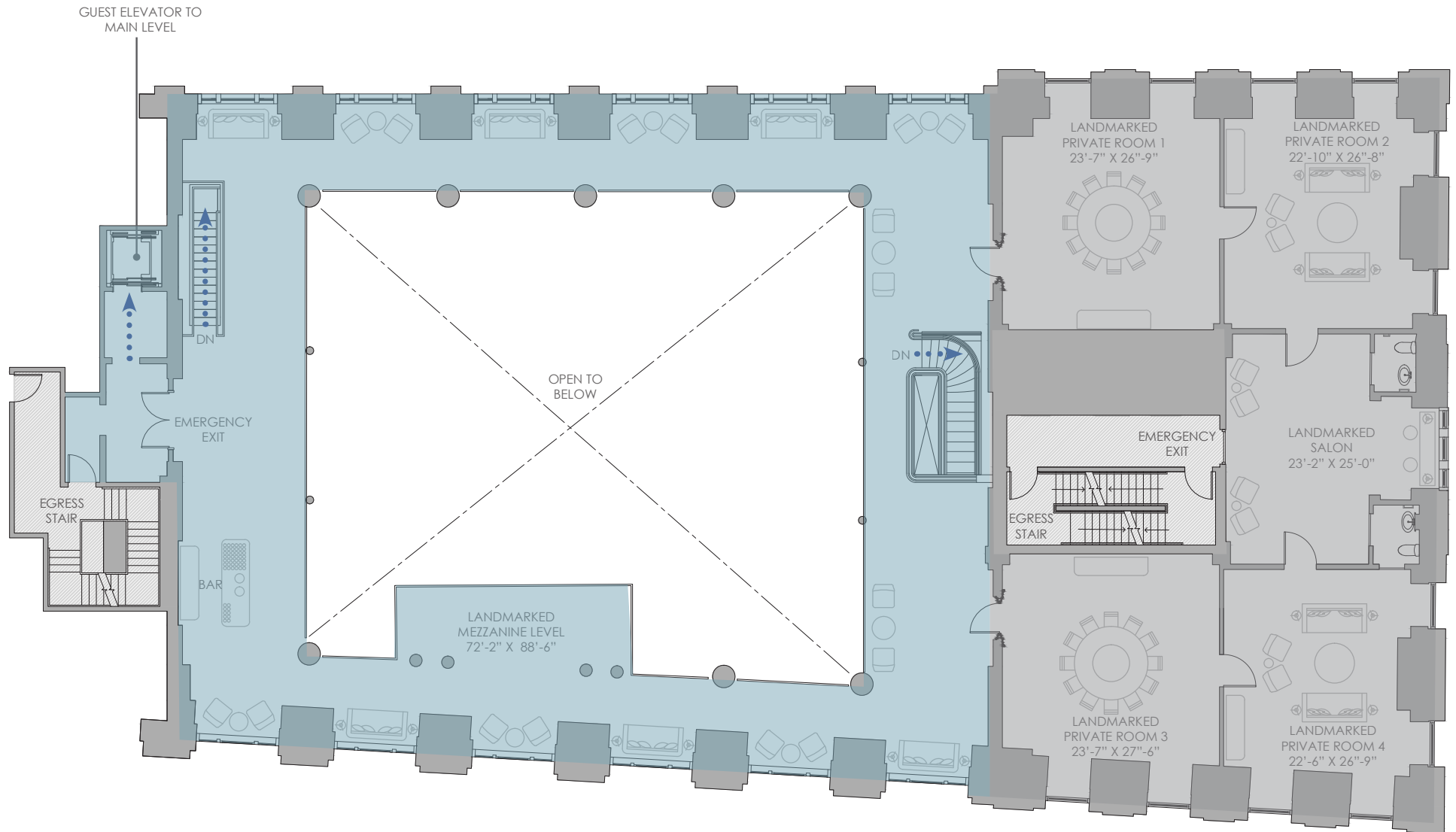
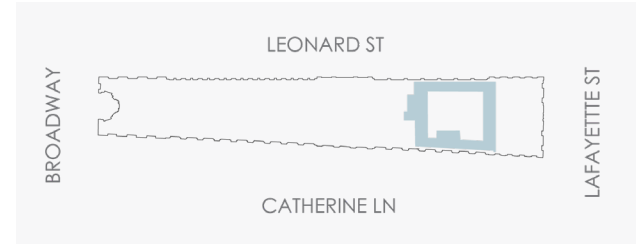
# MAIN LEVEL 10,339 Square Feet





THE BANKING HALL  
AT 108 LEONARD

## MEZZANINE 4,370 Square Feet



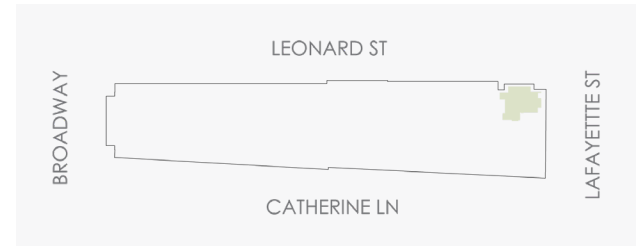
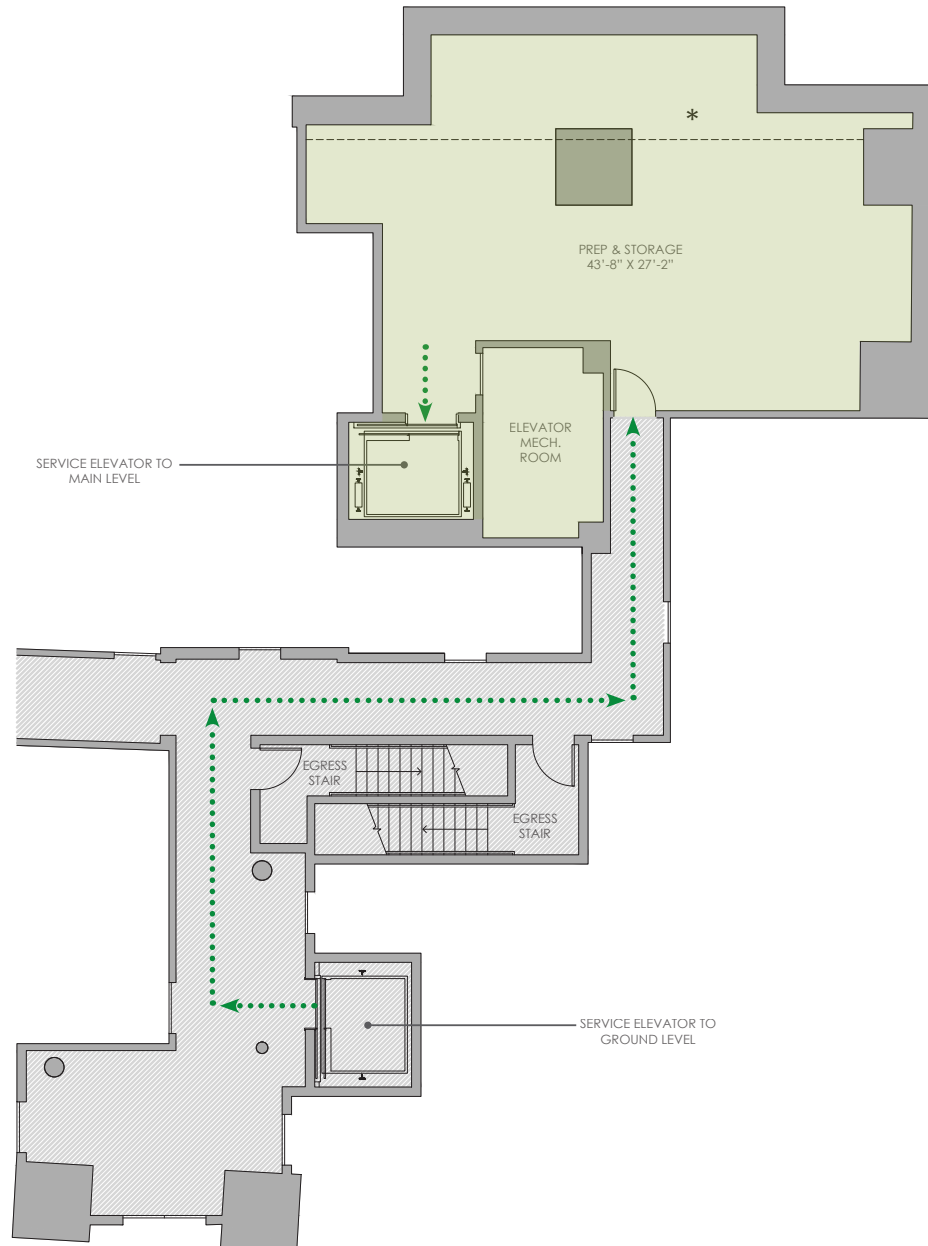
● Service Related Path ● Client Related Path





THE BANKING HALL  
AT 108 LEONARD

## CELLAR 1,267 Square Feet



● ServiceRelatedPath ● Client Related Path



THE BANKING HALL  
AT 108 LEONARD

## THE NEIGHBORHOOD

Known for its cobblestone streets, trendy restaurants and boutiques, Tribeca is one of New York City's chicest neighborhoods.

This prime location not only affords the Banking Hall at 108 Leonard proximity to New York's top restaurants, hotels, social clubs and other hot spots, it's also accessible by neighboring residential condominium in the area.

Notable neighbors include the New York Supreme Court, New York Law School, the U.S. Court of International Trade, City Hall, the New York Public Library, the Federal Building, the World Trade Center, and numerous transportation services.

\*Statistics are within a 0.25 mile radius of 108 Leonard



### EASILY ACCESSIBLE

<8 Minute Walk to 8 Subway Lines



### NEIGHBORHOOD WORKFORCE

~40,000 Employees



### RESIDENTIAL POPULATION

~13,000 Residents



### AVG HOUSEHOLD INCOME

\$109,227

39

### MEDIAN AGE

39 Years Old



### RESIDENTIAL UNITS

~5,000 Units



■ RETAIL   
 ■ OFFICE   
 ■ RESIDENTIAL   
 ■ POINTS OF INTEREST



**FOR MORE INFORMATION, PLEASE CONTACT**

Peter Braus Managing Principal | 212.776.1203 | [pbraus@lee-associates.com](mailto:pbraus@lee-associates.com)

Brad Schwarz Executive Managing Director & Principal | 212.776.1290 | [bschwarz@lee-associates.com](mailto:bschwarz@lee-associates.com)

Cory Gahr Managing Director | 212.776.1271 | [cgahr@lee-associates.com](mailto:cgahr@lee-associates.com)



Development managed by Elad Group. Sponsor: C3GB

All artist's or architectural renderings, sketches, graphic materials and photographs depicted or otherwise described herein are proposed and conceptual only, and are based upon preliminary development plans, which are subject to change. Sponsor reserves the right to make changes, substitutions of material, equipment, fixtures, finishes and appliances.

Certain images provided by Jeffrey Beers International and their designs are the intellectual property of Jeffrey Beers International, all rights reserved. Copyright 2018. Further use of the images or their designs can only be obtained via written permission of Jeffrey Beers International, LLC.