

As exclusive leasing agents, we are pleased to offer the following prime space for lease:

164 BLEECKER STREET

BETWEEN SULLIVAN ST & THOMPSON ST



PRIME GREENWICH VILLAGE RETAIL

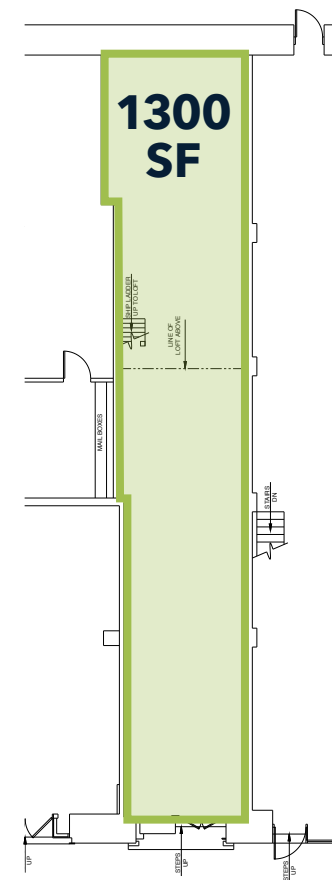
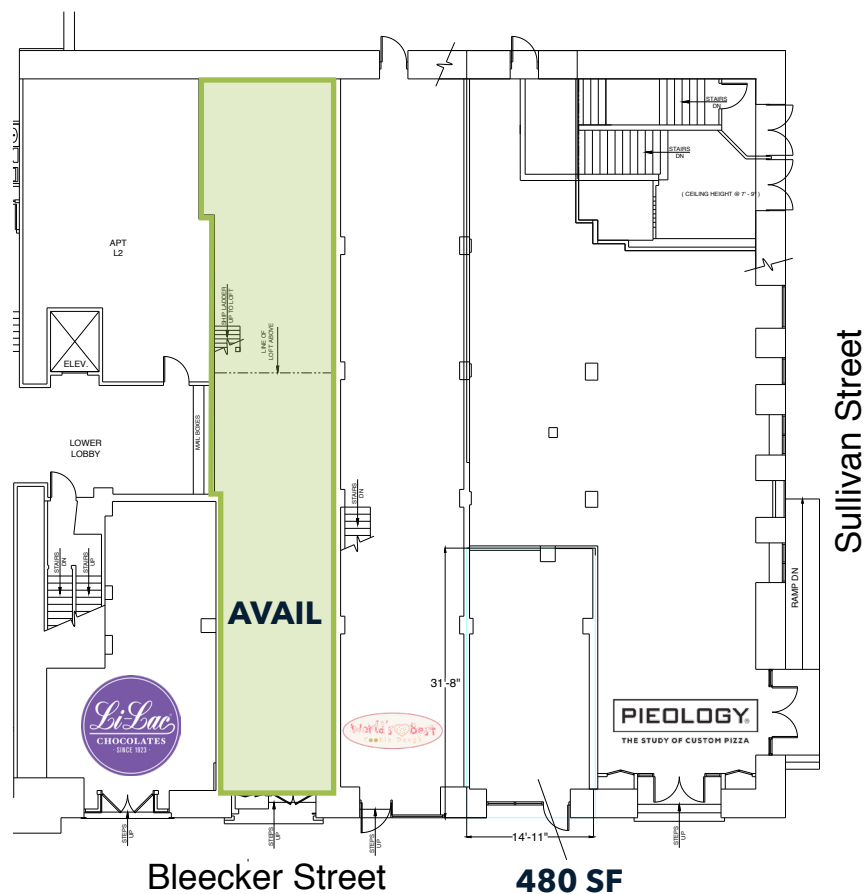
FOR MORE INFORMATION CONTACT

Mark Kapnick
Executive Vice President & Principal
mkapnick@lee-associates.com
212.776.1230

As exclusive leasing agents, we are pleased to offer the following prime space for lease:

164 BLEECKER STREET

BETWEEN SULLIVAN ST & THOMPSON ST



SPACE

Ground Floor **1300 SF**

Frontage **12'**

Ceiling Height **15'**

Asking Rent **Upon Request**

Possession **February, 2019**

NEIGHBORS



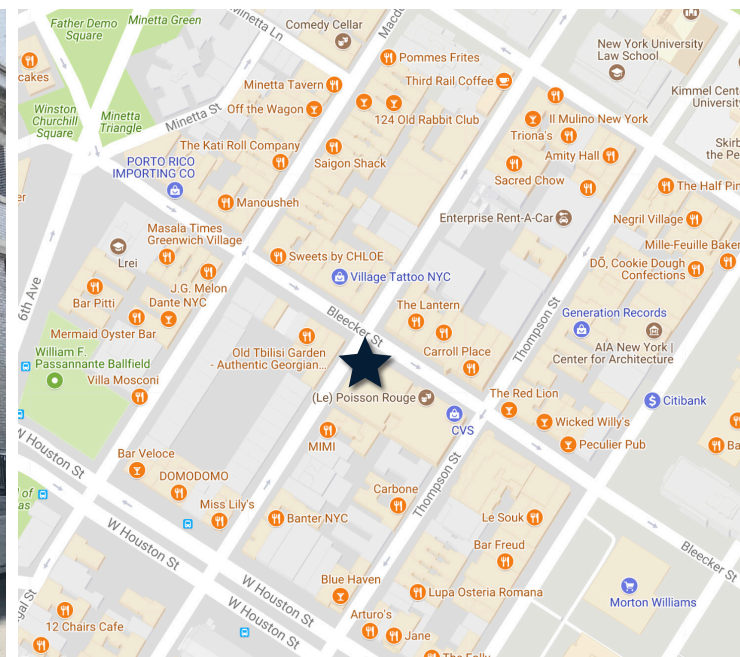
COMMENTS

All Uses Considered

Newly renovated ground floor retail
Heavy daytime & evening population
Can be vented through front w scrubber
200 Amp Electric

As exclusive leasing agents, we are pleased to offer the following prime space for lease:

164 BLEECKER STREET BETWEEN SULLIVAN ST & THOMPSON ST



PRIME GREENWICH VILLAGE RETAIL

FOR MORE INFORMATION CONTACT

Mark Kapnick
Executive Vice President & Principal
mkapnick@lee-associates.com
212.776.1230